

MUNDAY'S

Willow Way, Upper Sydenham

£400,000



Guide Price £400,000 - £415,000.

Tidy and bright two double bedroom second floor modern-built apartment of 736 square feet. Double-glazing throughout, a pleasing private balcony and large communal roof terrace are the cherries on top.

Walk eight minutes to Sydenham Station or 12 to Forest Hill (both offer mainline and overground services).

And Sydenham High Street, Kirkdale and Forest Hill's Dartmouth Road are all close for shops, social spots and amenities.

Munday's Estate Agents Ltd.
2 Mary Boast Walk
London SE5 8SP
020 3318 8900

www.mundays.com

MUNDAY'S



Munday's Estate Agents Ltd.
2 Mary Boast Walk
London SE5 8SP
020 3318 8900

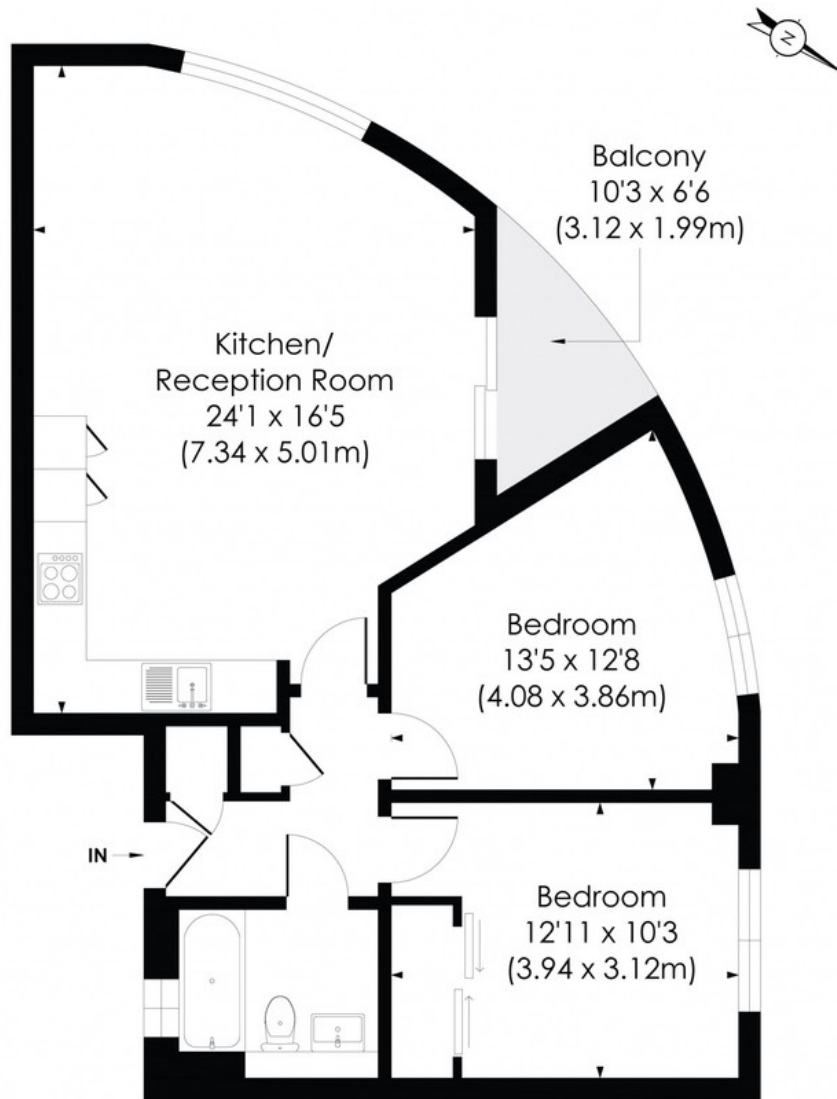
www.mundays.com

MUNDAY'S

WILLOW WAY, SE26

Approx. Gross Internal Floor Area

736 Sq. ft/68.36 Sq. m



SECOND FLOOR

© Pixangle Property Marketing Ltd. info@pixangle.com Tel: 0208 870 2118

pixangle
PROPERTY MARKETING

This floor plan has been prepared for the purpose of illustration only in accordance with the latest RICS code of measuring practice and is not to scale. All measurements and areas are approximate and whilst every effort has been made to ensure the accuracy of the plan contained here, no responsibility is taken for any error, omission or misstatement.

Munday's Estate Agents Ltd.
2 Mary Boast Walk
London SE5 8SP
020 3318 8900

www.mundays.com