

MUNDAY'S

Tressillian Crescent, Brockley

£650,000



Offers in excess of £650,000.

Beautiful and bright two double bedroom first floor conversion apartment of nearly 800 square feet, within a large bay-fronted Victorian semi. Chain free.

Find the delightful pad in a leafy and particularly quiet residential spot, within Brockley Conservation Area - a tiny stroll from Hilly Fields park, eight minutes from St Johns Station, and 10 from Brockley Station.

Parking is currently unrestricted on this and neighbouring streets.

Munday's Estate Agents Ltd.
2 Mary Boast Walk
London SE5 8SP
020 3318 8900

www.mundays.com

MUNDAY'S

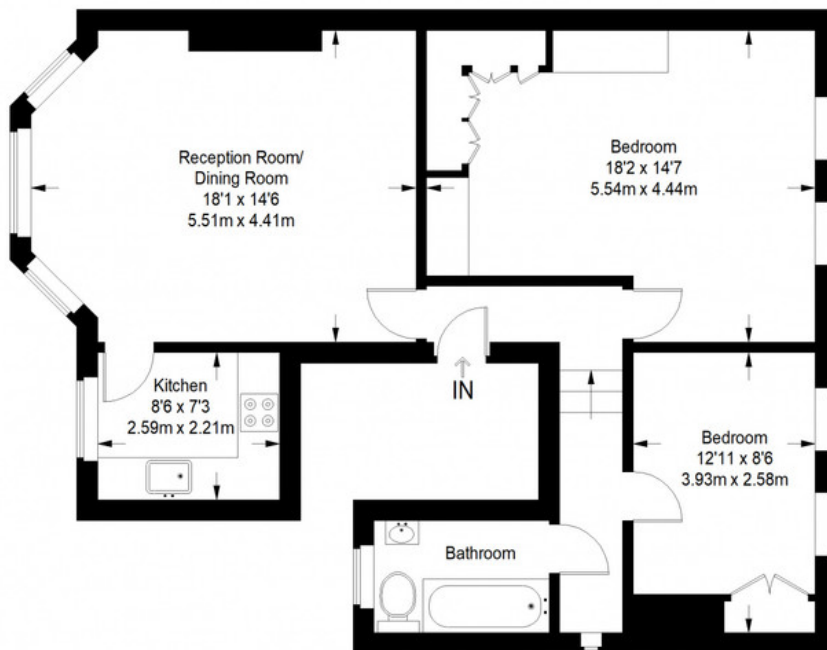


Munday's Estate Agents Ltd.
2 Mary Boast Walk
London SE5 8SP
020 3318 8900

www.mundays.com

MUNDAY'S

Tressillian Crescent



First Floor = 794 sq ft

Approximate Gross Internal Area
FIRST FLOOR = 794 sq ft / 73.76 sq m
Total = 794 sq ft / 73.76 sq m



This plan is for layout guidance only. Not drawn to scale unless stated. Windows and door openings are approximate. Whilst every care is taken in the preparation of this plan, please check all dimensions, shapes and compass bearings before making any decisions reliant upon them. (ID357409)

Munday's Estate Agents Ltd.
2 Mary Boast Walk
London SE5 8SP
020 3318 8900

www.mundays.com