

MUNDAY'S

St Faith's Road, Tulse Hill

£575,000



First floor Victorian conversion apartment within a smart semi - of 731 square feet - with two bedrooms (one double and one single).

Find your new pad on an attractive street which is just a four minute walk from Tulse Hill Station, and a seven minute one from glorious Brockwell Park. You are under a mile from Herne Hill Station and town centre, too. Chain free.

Munday's Estate Agents Ltd.
2 Mary Boast Walk
London SE5 8SP
020 3318 8900

www.mundays.com

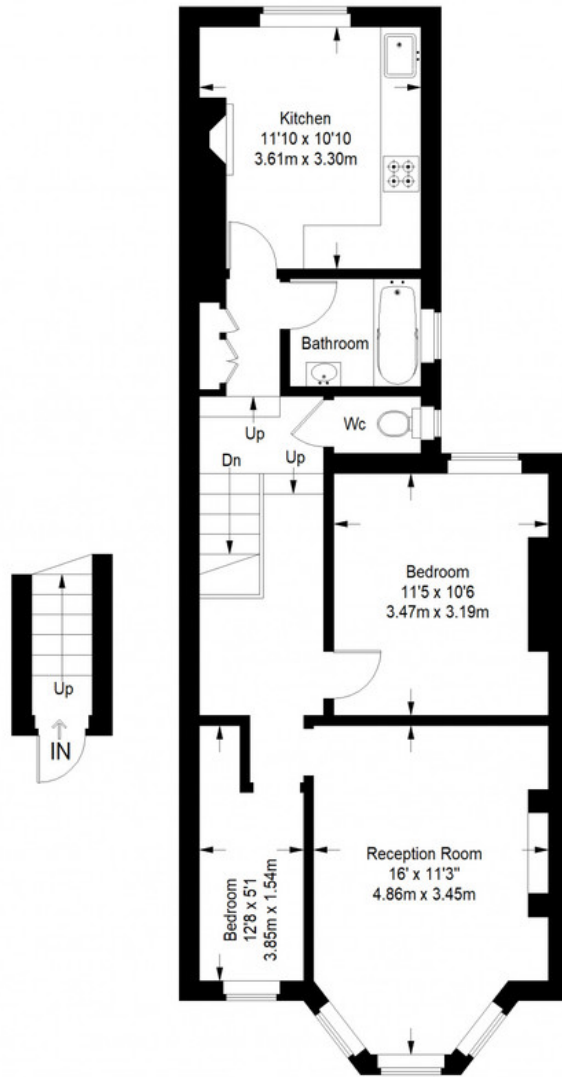
MUNDAY'S



Munday's Estate Agents Ltd.
2 Mary Boast Walk
London SE5 8SP
020 3318 8900

www.mundays.com

St. Faith Road



Ground Floor
Entrance= 24 sq ft

First Floor = 683 sq ft

Approximate Gross Internal Area
GROUND FLOOR = 24 sq ft / 2.23 sq m
FIRST FLOOR = 707 sq ft / 65.68 sq m
Total = 731 sq ft / 67.91 sq m



This plan is for layout guidance only. Not drawn to scale unless stated. Windows and door openings are approximate. Whilst every care is taken in the preparation of this plan, please check all dimensions, shapes and compass bearings before making any decisions reliant upon them. (ID357409)