

MUNDAY'S

Rockbourne Road, Forest Hill

£1,450,000



Large and light bay-fronted semi-detached four bedroom house of over 2000 square feet, delivered over four floors, with a south-east facing garden of circa 50 feet (with side-access). A smart paved front drive completes the impressive package.

The location is a quiet residential no-through street which is just a five minute walk from Forest Hill Station.

Local well-regarded schools include Stillness and Horniman primaries.

Munday's Estate Agents Ltd.
2 Mary Boast Walk
London SE5 8SP
020 3318 8900

www.mundays.com

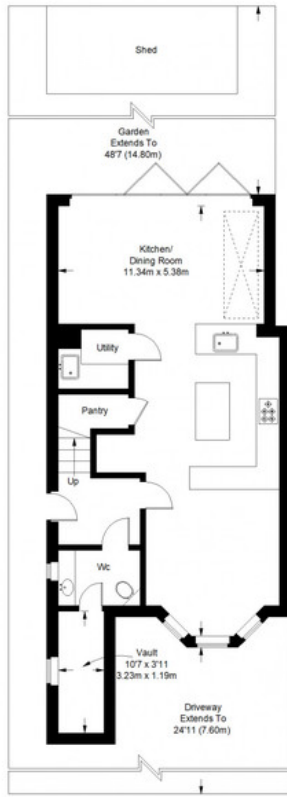
MUNDAY'S



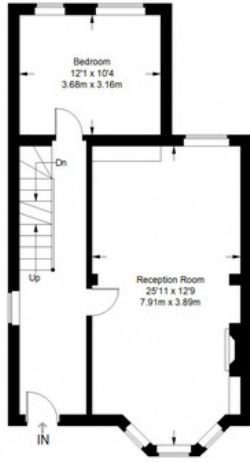
Munday's Estate Agents Ltd.
2 Mary Boast Walk
London SE5 8SP
020 3318 8900

www.mundays.com

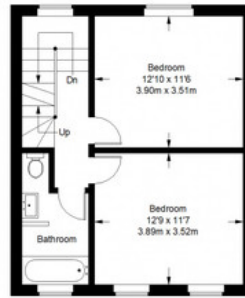
Rockbourne Road



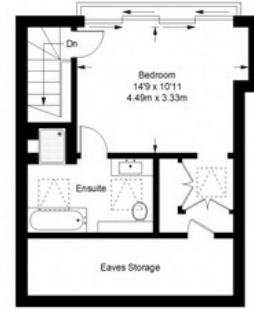
Lower Ground Floor = 712 sq ft



Raised Ground Floor = 596 sq ft



First Floor = 440 sq ft



Second Floor = 320 sq ft

Approximate Gross Internal Area
 LOWER GROUND FLOOR = 712 sq ft / 66.14 sq m
 RAISED GROUND FLOOR = 596 sq ft / 55.37 sq m
 FIRST FLOOR = 440 sq ft / 40.88 sq m
 SECOND FLOOR = 320 sq ft / 29.73 sq m
 Total = 2068 sq ft / 192.12 sq m



This plan is for layout guidance only. Not drawn to scale unless stated. Windows and door openings are approximate. Whilst every care is taken in the preparation of this plan, please check all dimensions, shapes and compass bearings before making any decisions reliant upon them. (ID357409)