

Myers Lane, New Cross

£330,000



Roomy, sunny and chain free two double bedroom second floor apartment of an impressive 675 square feet, with neutral decor and double-glazing throughout, set in a low-rise modern brick-built block, in a quiet residential cul-de-sac. Allocated parking completes the package. Enjoy it for yourself or as a good rental.

This is a quiet, well-connected spot; close to New Cross, South Bermondsey, Deptford and Peckham. Local green spaces include Bridgehouse Meadows and Deptford and Southwark parks.

MUNDAY'S

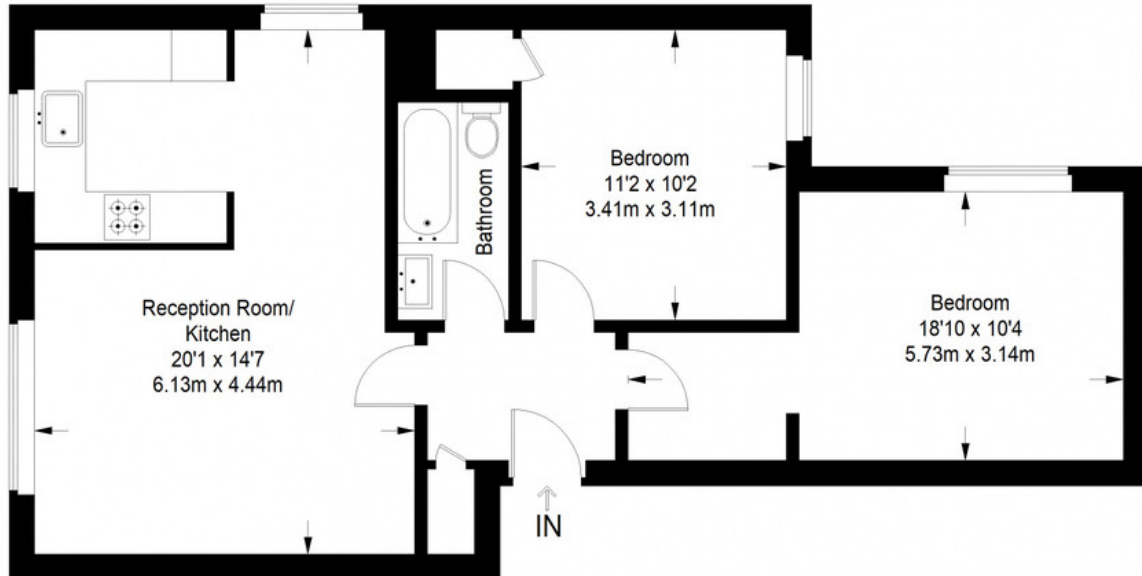


Munday's Estate Agents Ltd.
2 Mary Boast Walk
London SE5 8SP
020 3318 8900

www.mundays.com

MUNDAY'S

Henderson Court



Second Floor = 675 sq ft

Approximate Gross Internal Area
SECOND FLOOR = 675 sq ft / 62.71 sq m
Total = 675 sq ft / 62.71 sq m



This plan is for layout guidance only. Not drawn to scale unless stated. Windows and door openings are approximate. Whilst every care is taken in the preparation of this plan, please check all dimensions, shapes and compass bearings before making any decisions reliant upon them. (ID357409)

Munday's Estate Agents Ltd.
2 Mary Boast Walk
London SE5 8SP
020 3318 8900

www.mundays.com