

MUNDAY'S

Mount Pleasant Road, Hither Green

£399,950



Big, bright and beautiful one double bedroom conversion flat of 478 square feet, with a long lease. Find your new pad on a popular tree-lined street, just a ten minute stroll from three stations (Ladywell, Hither Green and Catford).

The flat sits on the upper ground floor of a tall Victorian semi-detached townhouse, and you also have a large south-facing private garden (of circa 8 metres each way), with secure side access and a handy shed.

You will enjoy loads of lovely features - some of our favourites include the contemporary white column radiators which have been installed throughout, and the clever storage space which has been made above the bathroom and the hall.

*Munday's Estate Agents Ltd.*  
2 Mary Boast Walk  
London SE5 8SP  
020 3318 8900

[www.mundays.com](http://www.mundays.com)

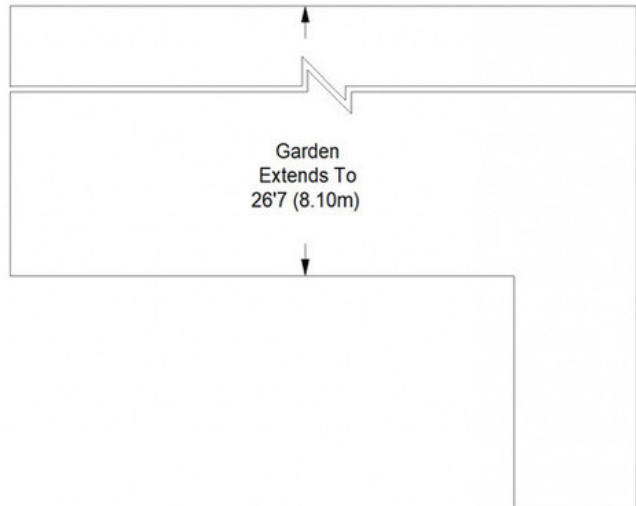
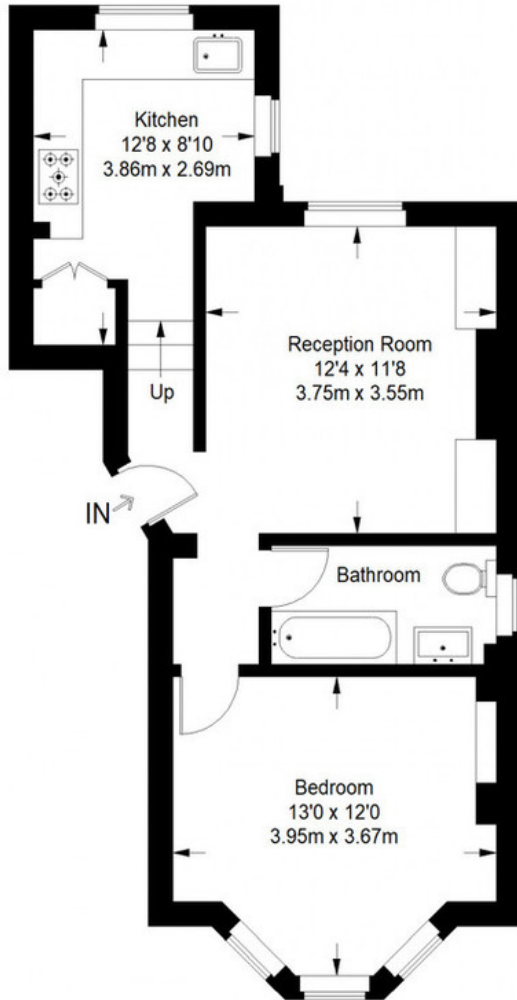
MUNDAY'S



*Munday's Estate Agents Ltd.*  
2 Mary Boast Walk  
London SE5 8SP  
020 3318 8900

[www.mundays.com](http://www.mundays.com)

## Mount Pleasant Road



**Raised Ground Floor = 478 sq ft**

Approximate Gross Internal Area  
RAISED GROUND FLOOR = 478 sq ft / 44.41 sq m  
Total = 478 sq ft / 44.41 sq m



This plan is for layout guidance only. Not drawn to scale unless stated. Windows and door openings are approximate. Whilst every care is taken in the preparation of this plan, please check all dimensions, shapes and compass bearings before making any decisions reliant upon them. (ID357409)