

MUNDAY'S

Mary Datchelor Close, Camberwell

£525,000



Large ex-LA maisonette of over 1000 square feet in first and second floor position, within a low-rise building. It has three smart carpeted bedrooms (two good doubles and a large single) and an east-facing terrace; which is accessed off the large reception room.

You are in a central yet tucked away Camberwell spot, just an 11 minute walk from Denmark Hill Station, and very close to Brunswick Park.

*Munday's Estate Agents Ltd.*  
2 Mary Boast Walk  
London SE5 8SP  
020 3318 8900

[www.mundays.com](http://www.mundays.com)

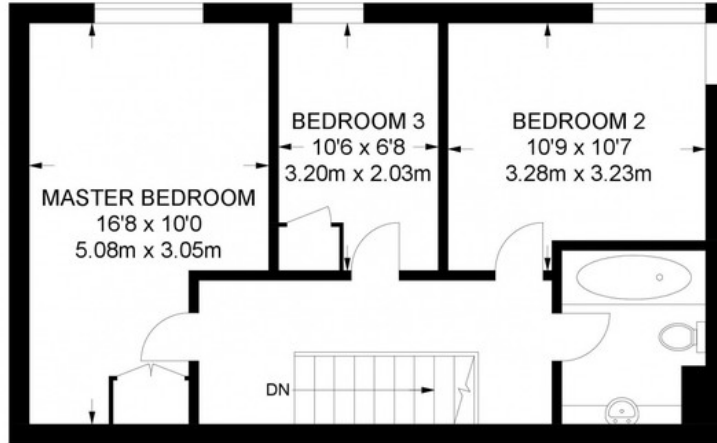
MUNDAY'S



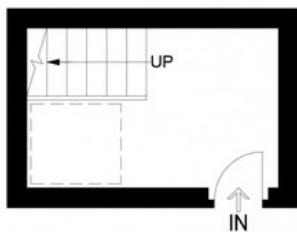
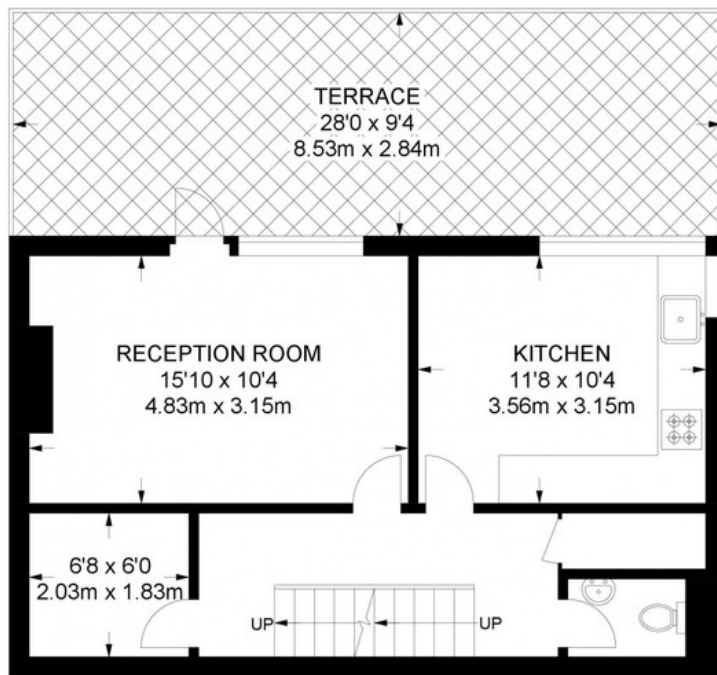
*Munday's Estate Agents Ltd.*  
2 Mary Boast Walk  
London SE5 8SP  
020 3318 8900

[www.mundays.com](http://www.mundays.com)

# MUNDAY'S



**SECOND FLOOR**  
473 SQ FT / 43.9 SQ M



**GROUND FLOOR**  
70 SQ FT / 6.5 SQ M

**FIRST FLOOR**  
473 SQ FT / 43.9 SQ M

**APPROXIMATE GROSS INTERNAL AREA**  
**1016 SQ FT / 94.3 SQ M**