

MUNDAY'S

Lyndhurst Way, Peckham Rye

£1,195,000



Delightful three bedroom bay-fronted mid-terraced house of 1143 square feet, with an east-facing garden (which stretches circa 25 feet). Chain free.

Find your new home within Holly Grove Conservation Area, just a few minutes from Bellenden Road and Peckham Rye Station. Warwick Gardens is even closer.

*Munday's Estate Agents Ltd.*  
2 Mary Boast Walk  
London SE5 8SP  
020 3318 8900

[www.mundays.com](http://www.mundays.com)

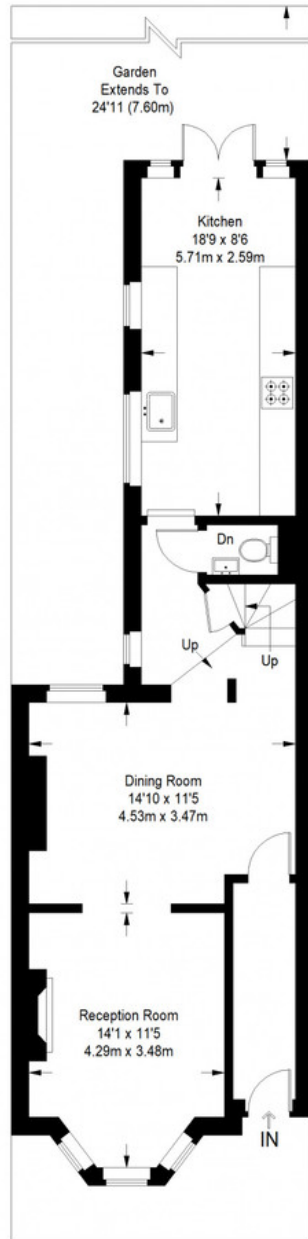
MUNDAY'S



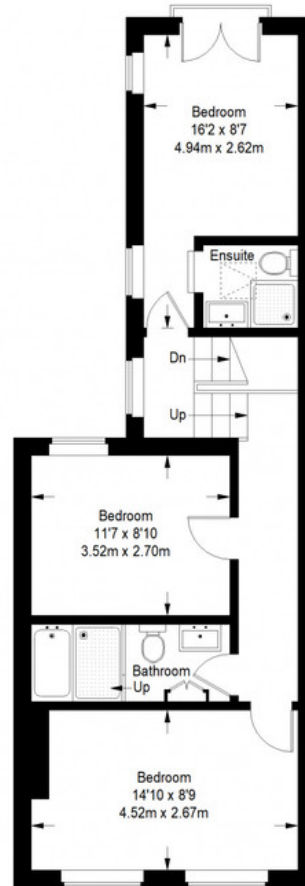
Munday's Estate Agents Ltd.  
2 Mary Boast Walk  
London SE5 8SP  
020 3318 8900

[www.mundays.com](http://www.mundays.com)

## Lyndhurst Way



Ground Floor = 602 sq ft



First Floor = 541 sq ft

Approximate Gross Internal Area  
 GROUND FLOOR = 602 sq ft / 55.93 sq m  
 FIRST FLOOR = 541 sq ft / 50.26 sq m  
 Total = 1143 sq ft / 106.18 sq m



This plan is for layout guidance only. Not drawn to scale unless stated. Windows and door openings are approximate. Whilst every care is taken in the preparation of this plan, please check all dimensions, shapes and compass bearings before making any decisions reliant upon them. (ID357409)