

MUNDAY'S

Lyndhurst Way, Peckham Rye

£2,695,000



Architecturally-treated five bedroom home over four full floors, of the finest order. An east-facing garden in excess of 100 feet completes the wow-factor package.

The wonderfully-wide and tall townhouse is early-Victorian, built in 1841. It rests on a popular street of similarly-grand homes, opposite Warwick Gardens.

You are situated just a few minutes from Bellenden Road and five from Peckham Rye Station.

The property has been recently thoroughly and luxuriously renovated by the current owners, with a pleasing no-expense-spared approach. Treats and expert finishes are too many to mention but include a Poggenpohl kitchen with Gaggenau appliances (400 series), Boffi bathrooms, Miloni tiles and Element 7 wooden floors.

Munday's Estate Agents Ltd.
2 Mary Boast Walk
London SE5 8SP
020 3318 8900

www.mundays.com

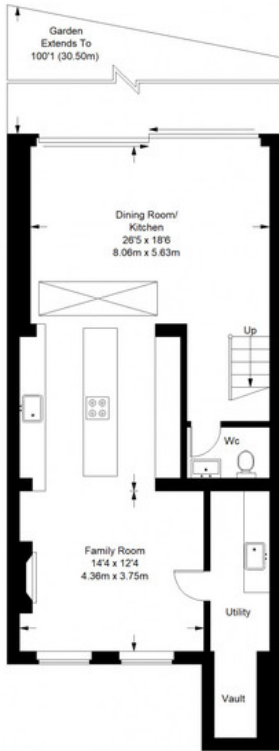
MUNDAY'S



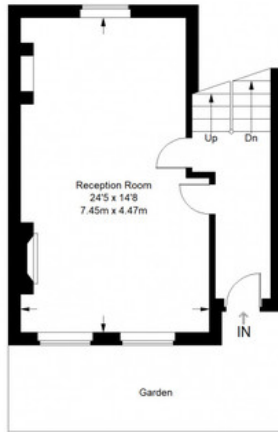
Munday's Estate Agents Ltd.
2 Mary Boast Walk
London SE5 8SP
020 3318 8900

www.mundays.com

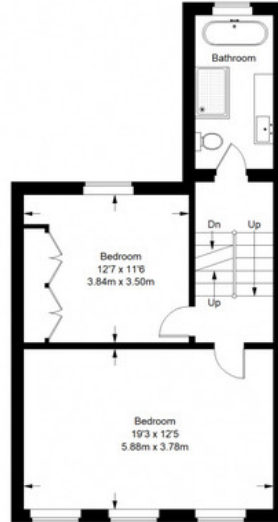
Lyndhurst Way



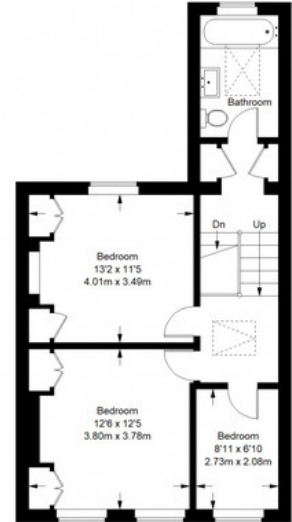
Lower Ground Floor = 780 sq ft



Upper Ground Floor = 430 sq ft



First Floor = 558 sq ft



Second Floor = 558 sq ft

Approximate Gross Internal Area
 LOWER GROUND FLOOR = 780 sq ft / 72.46 sq m
 UPPER GROUND FLOOR = 430 sq ft / 39.95 sq m
 FIRST FLOOR = 558 sq ft / 51.84 sq m
 SECOND FLOOR = 558 sq ft / 51.84 sq m
 Total = 2326 sq ft / 216.09 sq m



This plan is for layout guidance only. Not drawn to scale unless stated. Windows and door openings are approximate. Whilst every care is taken in the preparation of this plan, please check all dimensions, shapes and compass bearings before making any decisions reliant upon them. (ID357409)