

MUNDAY'S

Lympstone Gardens, Peckham

£450,000



Cool two double bedroom ex-LA maisonette of 754 square feet, with a great layout and good storage, and a cute south-facing balcony - which is directly accessed off the reception room.

The pleasing pad is in a quiet spot off the main drag in a low-rise block, yet you are very well connected - walk 15 minutes to Queens Road Peckham. Peckham Rye Station is yours in 18. Bus stops are a few minutes from your door. Residents have parking on the estate.

Munday's Estate Agents Ltd.
2 Mary Boast Walk
London SE5 8SP
020 3318 8900

www.mundays.com

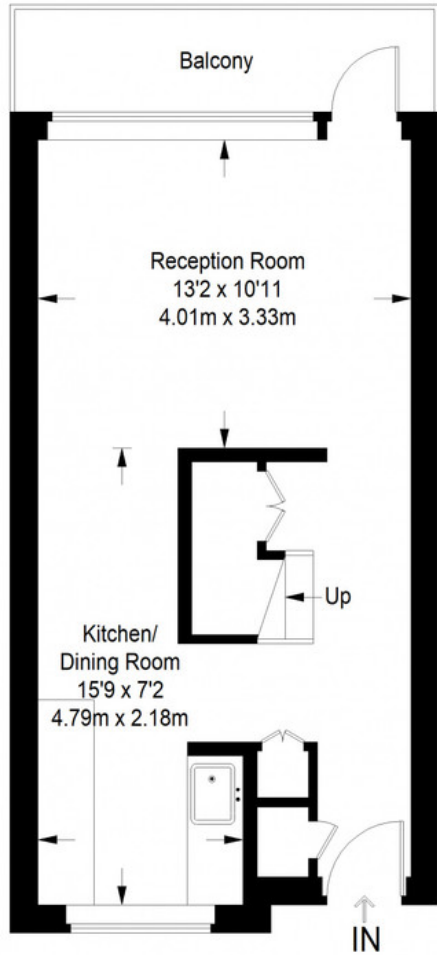
MUNDAY'S



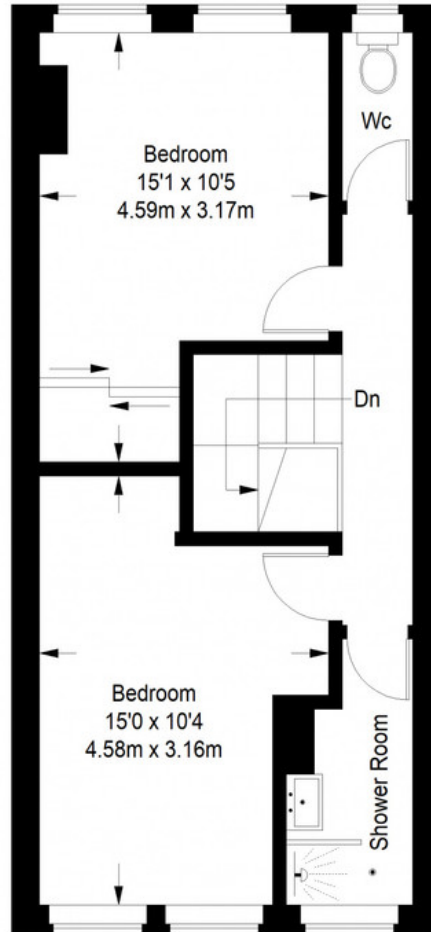
Munday's Estate Agents Ltd.
2 Mary Boast Walk
London SE5 8SP
020 3318 8900

www.mundays.com

Lympstone Gardens



Second Floor = 351 sq ft



Third Floor = 403 sq ft

Approximate Gross Internal Area
 SECOND FLOOR = 351 sq ft / 32.61 sq m
 THIRD FLOOR = 403 sq ft / 37.44 sq m
 Total = 754 sq ft / 70.05 sq m



This plan is for layout guidance only. Not drawn to scale unless stated. Windows and door openings are approximate. Whilst every care is taken in the preparation of this plan, please check all dimensions, shapes and compass bearings before making any decisions reliant upon them. (ID357409)