

MUNDAY'S

Lugard Road, Peckham

£1,100,000



Exceptional architect-designed and owned Victorian home, with a professionally landscaped south-east facing garden. Parking is unrestricted, on the street.

The location is the southerly-side of Queens Road. You are just a five minute walk from Queens Road Peckham Station, for regular and Overground services. Nunhead and Peckham Rye stations are also within a 15 minute walk.

Nunhead Green and Conservation Area - with popular villagey high street area - is a 10 minute stroll, and local schools include John Donne, Edmund Waller and Ivydale primaries.

Munday's Estate Agents Ltd.
2 Mary Boast Walk
London SE5 8SP
020 3318 8900

www.mundays.com

MUNDAY'S

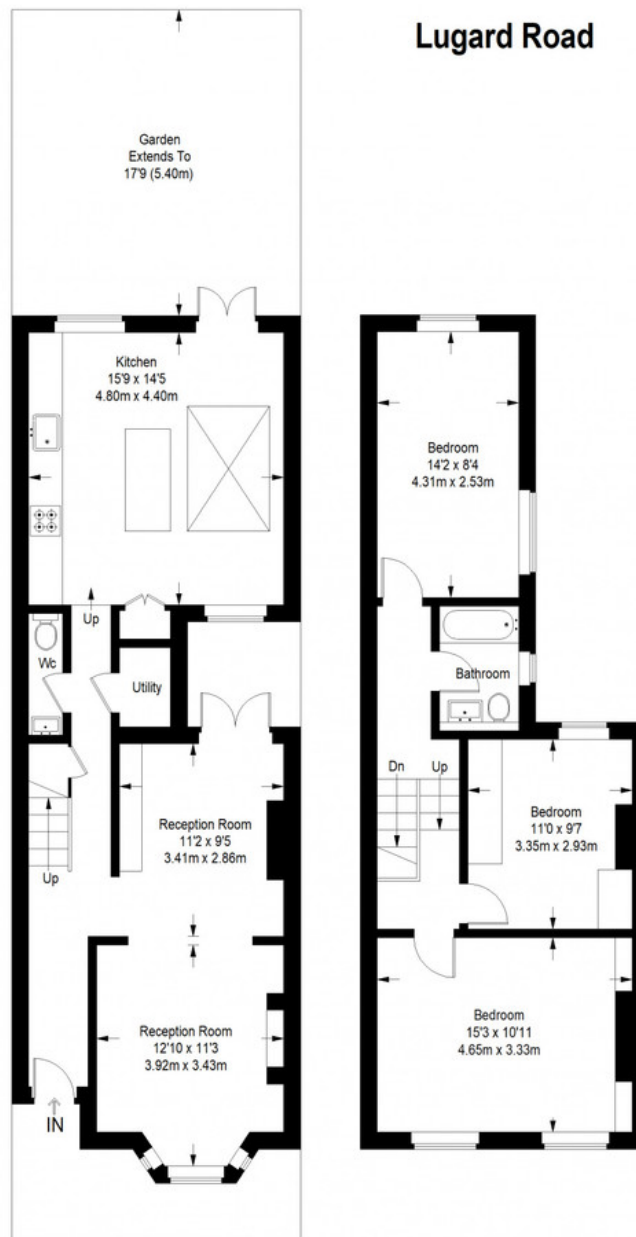


Munday's Estate Agents Ltd.
2 Mary Boast Walk
London SE5 8SP
020 3318 8900

www.mundays.com

MUNDAY'S

Lugard Road



Ground Floor = 636 sq ft

First Floor = 522 sq ft

Approximate Gross Internal Area
 GROUND FLOOR = 636 sq ft / 59.08 sq m
 FIRST FLOOR = 522 sq ft / 47.58 sq m
 Total = 1158 sq ft / 106.66 sq m



This plan is for layout guidance only. Not drawn to scale unless stated. Windows and door openings are approximate. Whilst every care is taken in the preparation of this plan, please check all dimensions, shapes and compass bearings before making any decisions reliant upon them. (ID357409)

Munday's Estate Agents Ltd.
 2 Mary Boast Walk
 London SE5 8SP
 020 3318 8900

www.mundays.com