

MUNDAY'S

Linwood Close, Camberwell

£385,000



Generous ground floor one bedroom flat of 514 square feet. Winning features include your own front door, a Freehold-share (with a very long lease), double-glazing throughout, and a designated parking space. Tick those boxes! Chain free.

Find the pleasing property within a low-rise purpose-built private development, which rests in well-established and well-tended communal grounds (in a cute cul de sac setting off gorgeous Grove Park); these even boast a mature woodland and communal BBQ area.

Peckham Rye and Denmark Hill stations (both Fare Zone 2) are your closest: walk just 10 and 12 minutes to these for regular and London Overground services.

Munday's Estate Agents Ltd.
2 Mary Boast Walk
London SE5 8SP
020 3318 8900

www.mundays.com

MUNDAY'S

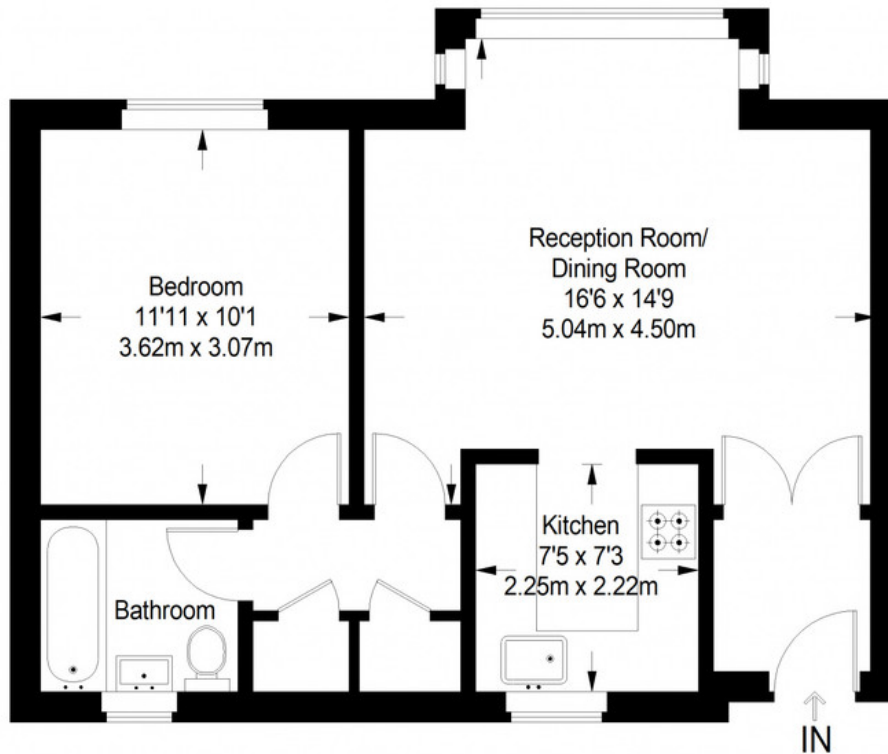


Munday's Estate Agents Ltd.
2 Mary Boast Walk
London SE5 8SP
020 3318 8900

www.mundays.com

MUNDAY'S

Linwood Close



Ground Floor = 514 sq ft

Approximate Gross Internal Area
GROUND FLOOR = 514 sq ft / 48sq m
Total = 514 sq ft / 48sq m



This plan is for layout guidance only. Not drawn to scale unless stated. Windows and door openings are approximate. Whilst every care is taken in the preparation of this plan, please check all dimensions, shapes and compass bearings before making any decisions reliant upon them. (ID357409)

Munday's Estate Agents Ltd.
2 Mary Boast Walk
London SE5 8SP
020 3318 8900

www.mundays.com