

MUNDAY'S

Ladlands, Overhill Road, East Dulwich

£500,000



Offers in excess of £500,000.

Bright and beautifully-renovated three double bedroom ex-LA maisonette of 874 square feet, within (MBE) Kate Macintosh's Dawson's Heights.

Off-street parking in a dedicated car park, and north and south facing balconies - on different levels (the property is coolly laid out over four levels in total) - complete the outstanding offering.

The iconic two-block development of 298 flats was built between 1964 and 1972. It has a modernist style, reminiscent of a ziggurat. English Heritage described the estate as having "a striking and original massing that possesses evocative associations with ancient cities and Italian hill towns".

You will enjoy a pleasing elevated position and incredible skyline views, and there is a small nature reserve to the north of the buildings.

Munday's Estate Agents Ltd.
2 Mary Boast Walk
London SE5 8SP
020 3318 8900

www.mundays.com

Wharf). Or grab a P13 to Peckham Rye.

MUNDAY'S

Munday's Estate Agents Ltd.
2 Mary Boast Walk
London SE5 8SP
020 3318 8900

www.mundays.com

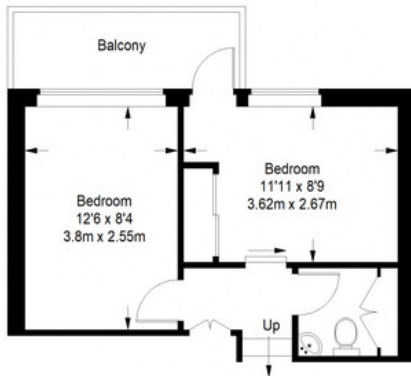
MUNDAY'S



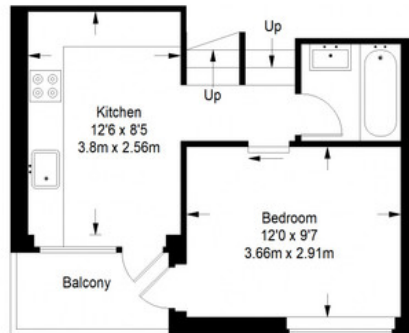
Munday's Estate Agents Ltd.
2 Mary Boast Walk
London SE5 8SP
020 3318 8900

www.mundays.com

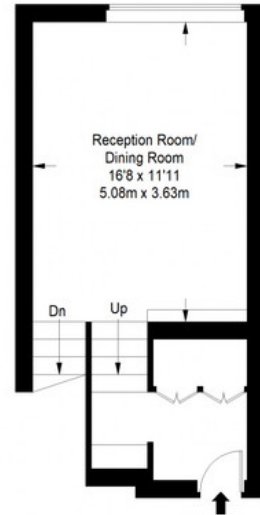
Ladlands



Lower First Floor



Upper First Floor



Second Floor

Approximate Gross Internal Area
LOWER & UPPER FIRST FLOOR = 588 sq ft / 54.63 sq m
SECOND FLOOR = 286 sq ft / 26.57 sq m
Total = 874 sq ft / 81.19 sq m



This plan is for layout guidance only. Not drawn to scale unless stated. Windows and door openings are approximate. Whilst every care is taken in the preparation of this plan, please check all dimensions, shapes and compass bearings before making any decisions reliant upon them. (ID357409)