

Kirkwood Road, Nunhead

£995,000



Very lovely flat-fronted Victorian terrace, just shy of 1000 square feet. Find your new home on a quiet, tree-lined street in central Nunhead, close to Nunhead's high street and Nunhead Green Conservation Area.

The handsome house hosts three bedrooms (two doubles and one single), a large kitchen/diner stretching over 22 feet, a double-reception, a smart bathroom, and a sunny landscaped garden of around 50 feet - which faces west with a twist of south.

Welcome period features include a handsome fireplace in the reception room and coving and picture rails in many of the rooms.

For stations, you are positioned between a choice of three! Nunhead (walk 8 minutes), Queen's Road Peckham (10) and Peckham Rye (14). All are Fare Zone 2 and the latter two offer London Overground in addition to main line services. Parking is currently unrestricted, on-street.

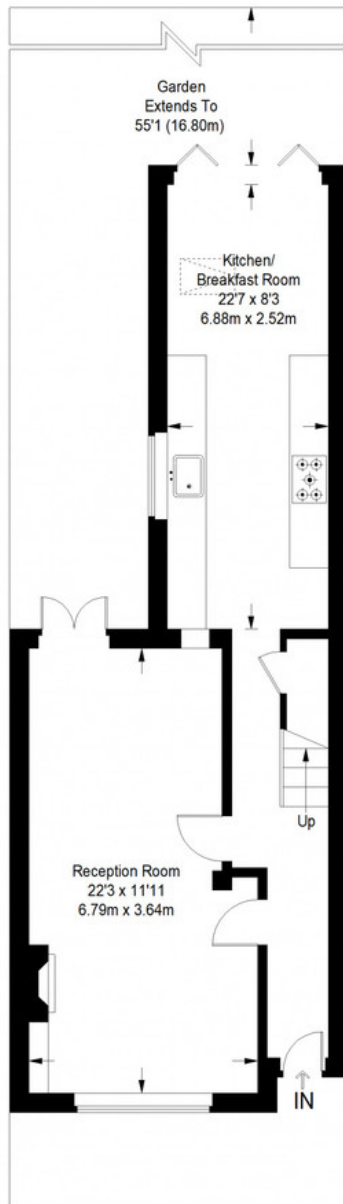
MUNDAY'S



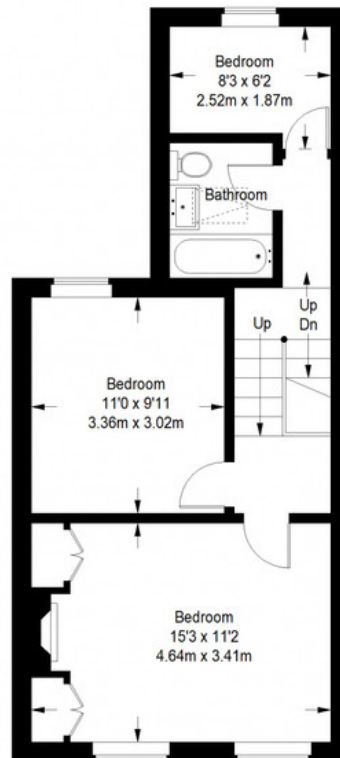
Munday's Estate Agents Ltd.
2 Mary Boast Walk
London SE5 8SP
020 3318 8900

www.mundays.com

Kirkwood Road



Ground Floor = 541 sq ft



First Floor = 458 sq ft

Approximate Gross Internal Area
GROUND FLOOR = 541 sq ft / 50.26 sq m
FIRST FLOOR = 458 sq ft / 42.55 sq m
Total = 999 sq ft / 92.81 sq m



This plan is for layout guidance only. Not drawn to scale unless stated. Windows and door openings are approximate. Whilst every care is taken in the preparation of this plan, please check all dimensions, shapes and compass bearings before making any decisions reliant upon them. (ID357409)