

MUNDAY'S

Kings Grove, Peckham

£529,950



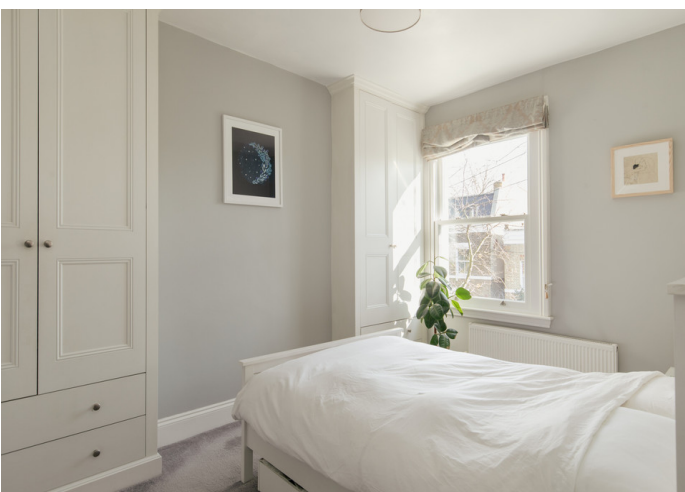
Offers in the region of £529,950.

Ruddy lovely two bedroom first (top) floor Victorian conversion flat, on a quiet and tree-lined no-through street, winning-at-life close to Queens Road Peckham Station (walk four minutes, or you are 14 from Peckham Rye Station).

Munday's Estate Agents Ltd.
2 Mary Boast Walk
London SE5 8SP
020 3318 8900

www.mundays.com

MUNDAY'S

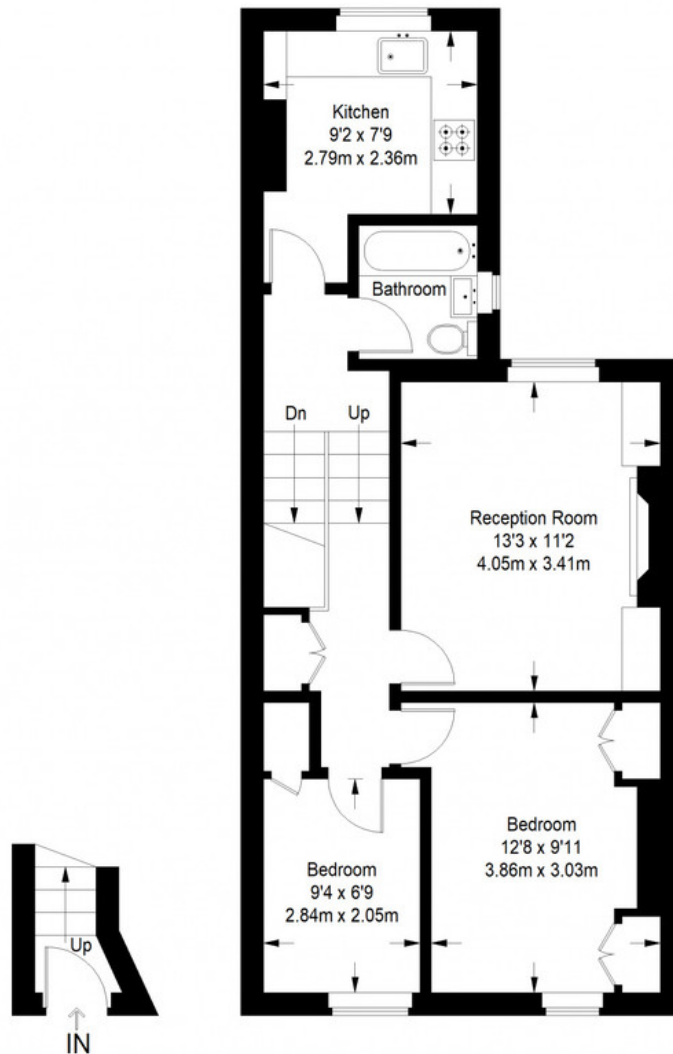


Munday's Estate Agents Ltd.
2 Mary Boast Walk
London SE5 8SP
020 3318 8900

www.mundays.com

MUNDAY'S

Kings Grove



Ground Floor
Entrance = 19 sq ft

First Floor = 586 sq ft

Approximate Gross Internal Area
GROUND FLOOR ENTRANCE = 19 sq ft / 1.77 sq m
FIRST FLOOR = 586 sq ft / 54.44 sq m
Total = 605 sq ft / 56.20 sq m



This plan is for layout guidance only. Not drawn to scale unless stated. Windows and door openings are approximate. Whilst every care is taken in the preparation of this plan, please check all dimensions, shapes and compass bearings before making any decisions reliant upon them. (ID357409)

Munday's Estate Agents Ltd.
2 Mary Boast Walk
London SE5 8SP
020 3318 8900

www.mundays.com