

MUNDAY'S

Kings Grove, Peckham

£485,000



Best and final offers invited by 5pm, Friday 28th February.

Delightful and freshly-renovated two bedroom first (top) floor Victorian conversion flat, on a quiet and tree-lined no-through street which puts you really close to Queens Road Peckham Station (walk just three minutes, or you are 13 from Peckham Rye Station).

There are just three flats in the building, and the loft space is pleasingly demised to this flat.

Munday's Estate Agents Ltd.
2 Mary Boast Walk
London SE5 8SP
020 3318 8900

www.mundays.com

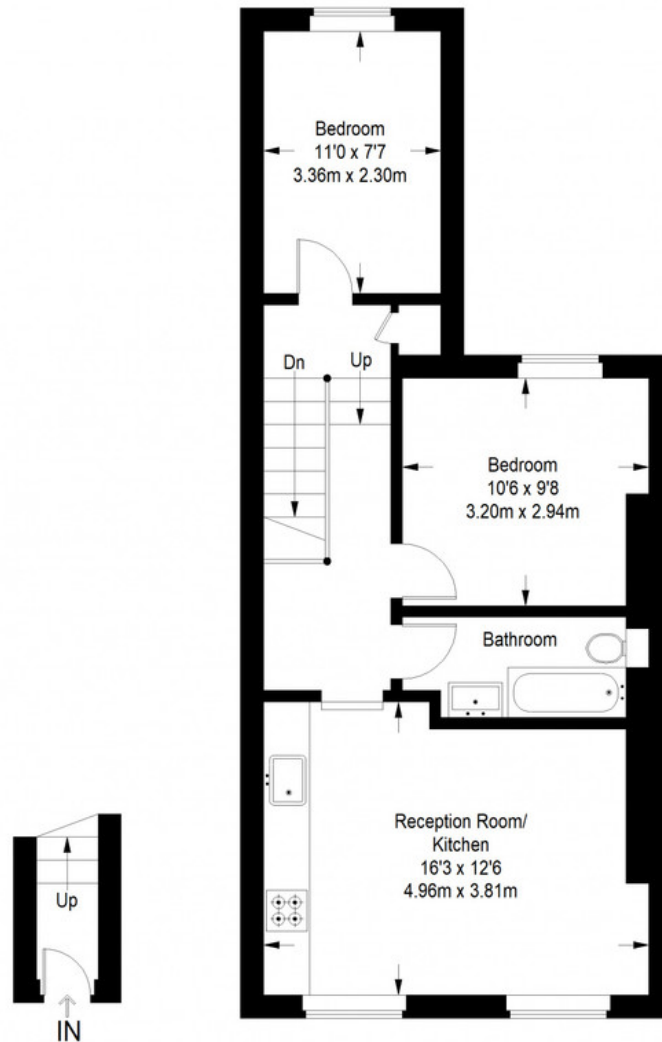
MUNDAY'S



Munday's Estate Agents Ltd.
2 Mary Boast Walk
London SE5 8SP
020 3318 8900

www.mundays.com

Kings Grove



Ground Floor
Entrance = 19 sq ft

First Floor = 542 sq ft

Approximate Gross Internal Area
GROUND FLOOR = 19 sq ft / 1.77 sq m
FIRST FLOOR = 542 sq ft / 50.35 sq m
Total = 561 sq ft / 52.12 sq m



This plan is for layout guidance only. Not drawn to scale unless stated. Windows and door openings are approximate. Whilst every care is taken in the preparation of this plan, please check all dimensions, shapes and compass bearings before making any decisions reliant upon them. (ID357409)