

MUNDAY'S

Highshore Road, Peckham Rye

£375,000



Sunny central-Peckham third floor one bedroom apartment of 420 square feet. Very long leasehold.

You are just a few minutes from Peckham Rye Station, within 'The Catcher Building': a seriously-smart repurposed office building of 31 luxury units.

The slick and standout building was designed by Calico Architects, and delivered by EHA group.

The location puts you slap bang in the heart of the ever-popular Peckham Rye area - with Rye Lane, Bellenden Road and Peckham Rye Park and Common all at your feet in minutes.

Munday's Estate Agents Ltd.
2 Mary Boast Walk
London SE5 8SP
020 3318 8900

www.mundays.com

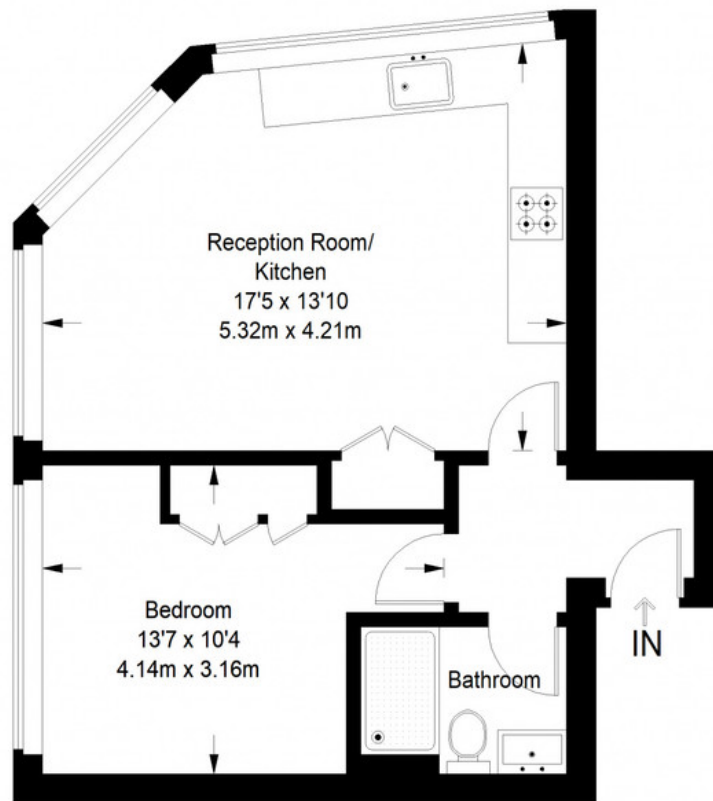
MUNDAY'S



Munday's Estate Agents Ltd.
2 Mary Boast Walk
London SE5 8SP
020 3318 8900

www.mundays.com

The Catcher Building



Third Floor = 420 sq ft

Approximate Gross Internal Area
THIRD FLOOR = 420 sq ft / 39.02 sq m
Total = 420 sq ft / 39.02 sq m



This plan is for layout guidance only. Not drawn to scale unless stated. Windows and door openings are approximate. Whilst every care is taken in the preparation of this plan, please check all dimensions, shapes and compass bearings before making any decisions reliant upon them. (ID357409)