

MUNDAY'S

Henslowe Road, East Dulwich

£825,000



Best and final offers invited by 5pm, Tuesday 18th March.

Ravishing, architecturally-treated three double bedroom apartment with a Freehold-share and a generous low-maintenance garden. Your new pad - which is just shy of 900 square feet - takes the ground floor of a handsome bay-fronted Victorian semi (there is just one flat above you).

This is a delightful tree-lined residential Dulwich street, with little through-traffic (think driving lesson turf), approximately a 10 minute stroll from Lordship Lane and North Cross Road.

You are even closer to Peckham Rye Park and Common's 113 acres - walk here in five minutes.

East Dulwich Station is a pleasant mile walk or you can take a quick bus trip to Peckham Rye Station. Dulwich Park and Horniman Gardens are also easily reached by foot.

Munday's Estate Agents Ltd.
2 Mary Boast Walk
London SE5 8SP
020 3318 8900

www.mundays.com

MUNDAY'S

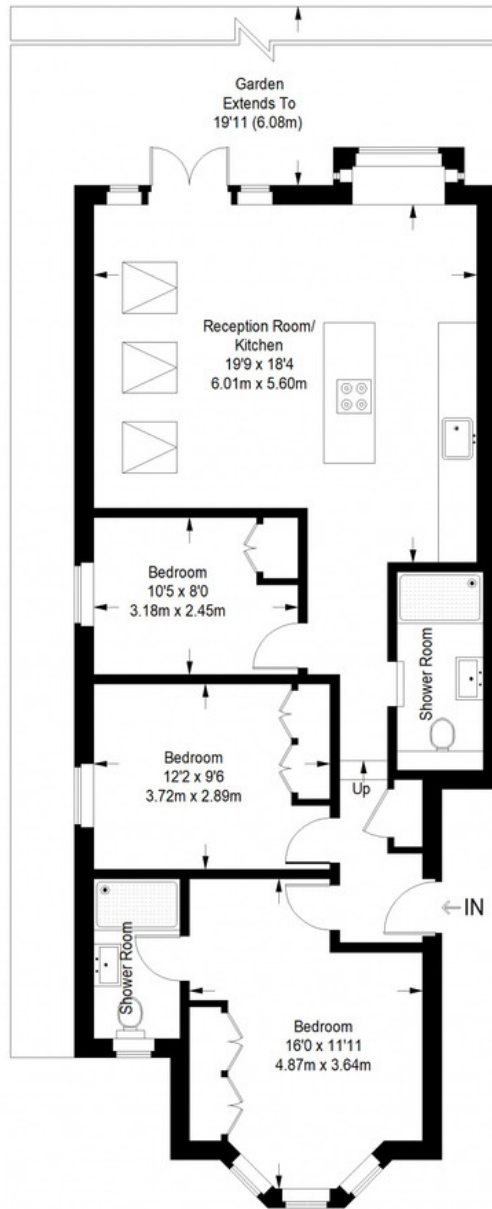


Munday's Estate Agents Ltd.
2 Mary Boast Walk
London SE5 8SP
020 3318 8900

www.mundays.com

MUNDAY'S

Henslowe Road



Ground Floor = 898 sq ft

Approximate Gross Internal Area
GROUND FLOOR = 898 sq ft / 83.42 sq m
Total = 898 sq ft / 83.42 sq m



This plan is for layout guidance only. Not drawn to scale unless stated. Windows and door openings are approximate. Whilst every care is taken in the preparation of this plan, please check all dimensions, shapes and compass bearings before making any decisions reliant upon them. (ID357409)

Munday's Estate Agents Ltd.
2 Mary Boast Walk
London SE5 8SP
020 3318 8900

www.mundays.com