

MUNDAY'S

Grovelands Close, Camberwell

£435,000



Offers in excess of £435,000.

Delightful one double bedroom semi-detached modern-build Freehold house of 475 square feet, in a leafy residential setting on Grovelands Close – a most pleasing offshoot of grand Camberwell Grove, with thoughtful landscaping ensuring outlooks are green.

The property is double-glazed throughout and has an attractive and neutral decorative scheme. A pretty south-facing garden (to the front) plus a dedicated parking space complete the package.

What a spot! Denmark Hill Station is all of a five minute walk. Peckham Rye Station is yours in 16. Both are Fare Zone 2. You are close to good bus routes, too. Central Camberwell is landed upon in under 10 minutes (Peckham's Bellenden Road = 15 and Rye Lane = 17).

Munday's Estate Agents Ltd.
2 Mary Boast Walk
London SE5 8SP
020 3318 8900

www.mundays.com

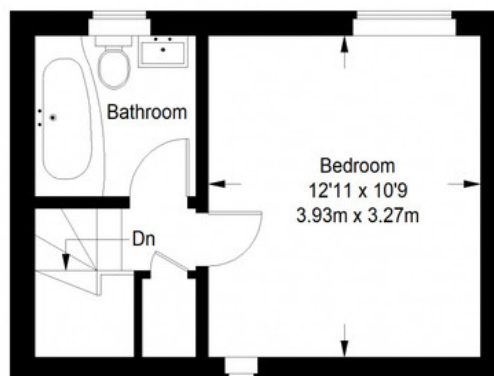
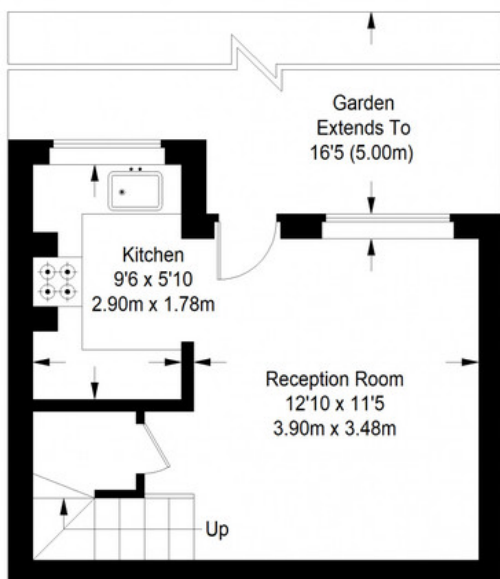
MUNDAY'S



Munday's Estate Agents Ltd.
2 Mary Boast Walk
London SE5 8SP
020 3318 8900

www.mundays.com

Grovelands Close



Ground Floor = 248 sq ft

First Floor = 227 sq ft

Approximate Gross Internal Area
GROUND FLOOR = 248 sq ft / 23.04 sq m
FIRST FLOOR = 227 sq ft / 21.09 sq m
Total = 475 sq ft / 44.13 sq m



This plan is for layout guidance only. Not drawn to scale unless stated. Windows and door openings are approximate. Whilst every care is taken in the preparation of this plan, please check all dimensions, shapes and compass bearings before making any decisions reliant upon them. (ID357409)