

MUNDAY'S

Grove Lane, Camberwell

£500,000



Offers in excess of £500,000.

Big and bright two bedroom ex-LA first floor apartment within a low-rise brick-built block on gorgeous Grove Lane, within Camberwell Grove Conservation Area.

Walk just six minutes to Denmark Hill Station, or 10 to East Dulwich Station. The town centres of East Dulwich, Camberwell and Peckham are all within an easy walking distance.

Munday's Estate Agents Ltd.
2 Mary Boast Walk
London SE5 8SP
020 3318 8900

www.mundays.com

MUNDAY'S

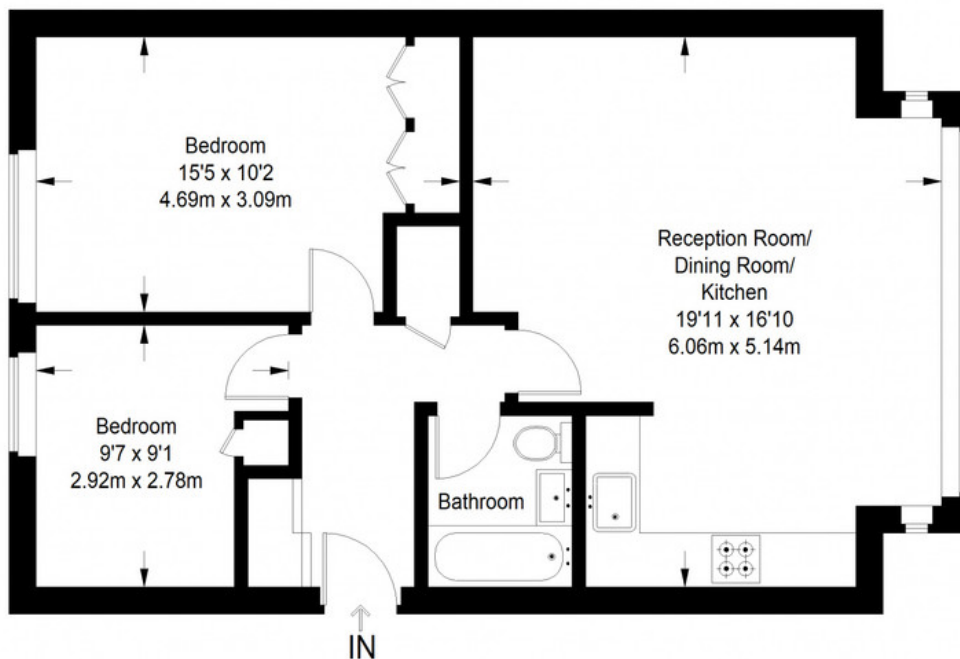


Munday's Estate Agents Ltd.
2 Mary Boast Walk
London SE5 8SP
020 3318 8900

www.mundays.com

MUNDAY'S

Harfield Gardens



First Floor = 643 sq ft

Approximate Gross Internal Area
FIRST FLOOR = 643 sq ft / 59.73 sq m
Total = 643 sq ft / 59.73 sq m



This plan is for layout guidance only. Not drawn to scale unless stated. Windows and door openings are approximate. Whilst every care is taken in the preparation of this plan, please check all dimensions, shapes and compass bearings before making any decisions reliant upon them. (ID357409)

Munday's Estate Agents Ltd.
2 Mary Boast Walk
London SE5 8SP
020 3318 8900

www.mundays.com