

MUNDAY'S

Grove Lane, Camberwell

£400,000



Best and final offers invited by Wednesday 12th February.

Picture-perfect one bedroom Victorian conversion flat with a Freehold-share (and long lease), a delightful sunny courtyard garden, and own front door.

Find your new pretty pad on prestigious Grove Lane, in the heart of leafy Camberwell Grove Conservation Area.

You are just a seven minute walk from Denmark Hill Station (Fare Zone 2, and on the Overground network), and but a few minutes from central Camberwell and Camberwell Green - for town centre amenities and fab bus routes to boot. Permit-parking is available on the street for residents.

Munday's Estate Agents Ltd.
2 Mary Boast Walk
London SE5 8SP
020 3318 8900

www.mundays.com

MUNDAY'S

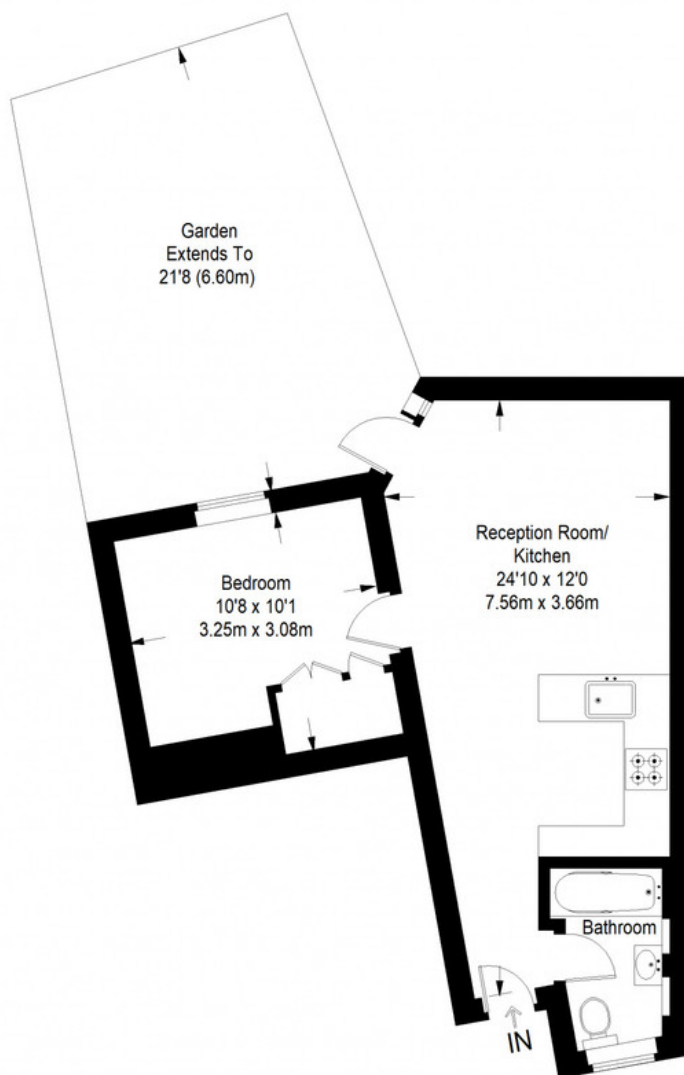


Munday's Estate Agents Ltd.
2 Mary Boast Walk
London SE5 8SP
020 3318 8900

www.mundays.com

MUNDAY'S

Grove Lane



Ground Floor = 381 sq ft

Approximate Gross Internal Area
GROUND FLOOR = 381 sq ft / 35.39 sq m
Total = 381 sq ft / 35.39 sq m



This plan is for layout guidance only. Not drawn to scale unless stated. Windows and door openings are approximate. Whilst every care is taken in the preparation of this plan, please check all dimensions, shapes and compass bearings before making any decisions reliant upon them. (ID357409)

Munday's Estate Agents Ltd.
2 Mary Boast Walk
London SE5 8SP
020 3318 8900

www.mundays.com