

MUNDAY'S

Gordon Road, Nunhead

£565,000



Smart and bright two bedroom second floor apartment of 631 square feet, with two private balconies, double-glazing throughout, and a neutral decorative scheme. A secure allocated parking space wraps up the pleasing package.

Gordon Road is a wide, quiet and popular residential street - close to Nunhead Green and village-vibe high street.

You have got three Fare Zone 2 stations within very easy reach/all circa 10 minutes by foot: Nunhead, Peckham Rye and Queens Road Peckham.

Munday's Estate Agents Ltd.
2 Mary Boast Walk
London SE5 8SP
020 3318 8900

www.mundays.com

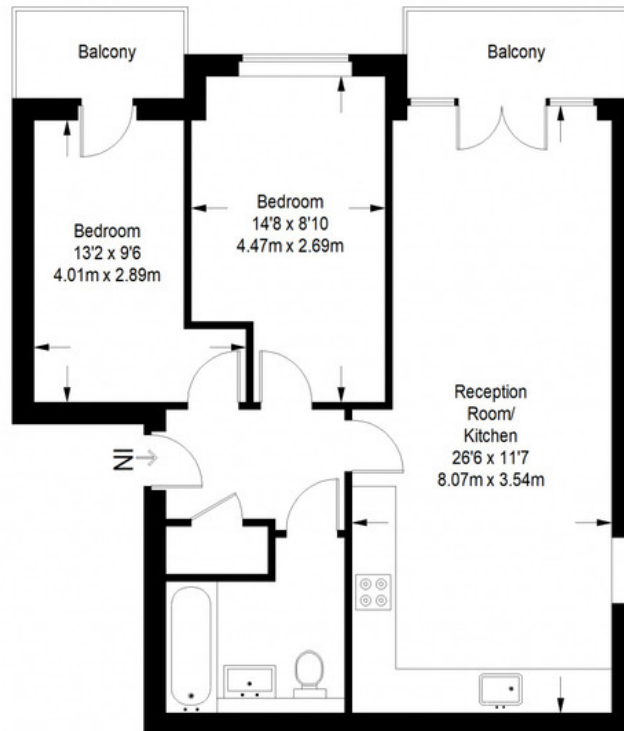
MUNDAY'S



Munday's Estate Agents Ltd.
2 Mary Boast Walk
London SE5 8SP
020 3318 8900

www.mundays.com

Gordon Road



Second Floor = 631 sq ft



Approximate Gross Internal Area
SECOND FLOOR = 631 sq ft / 58.62 sq m
Total = 631 sq ft / 58.62 sq m

This plan is for layout guidance only. Not drawn to scale unless stated. Windows and door openings are approximate. Whilst every care is taken in the preparation of this plan, please check all dimensions, shapes and compass bearings before making any decisions reliant upon them. (ID357409)