

MUNDAY'S

Fresco House, Southampton Way,  
Camberwell

£695,000



Big and bright and immaculately-presented three double bedroom (second floor) apartment which is just shy of 1000 square feet. Two sunny south-facing balconies complete the sleek package.

The property has been owned just once from new. It is an excellent live-in or let-out home to own, and the location is a strong one. You are close to Burgess Park (which has seen huge investment).

Walk just 5-10 minutes to central Camberwell, or circa 20 to central Peckham.

*Munday's Estate Agents Ltd.*  
2 Mary Boast Walk  
London SE5 8SP  
020 3318 8900

[www.mundays.com](http://www.mundays.com)

MUNDAY'S

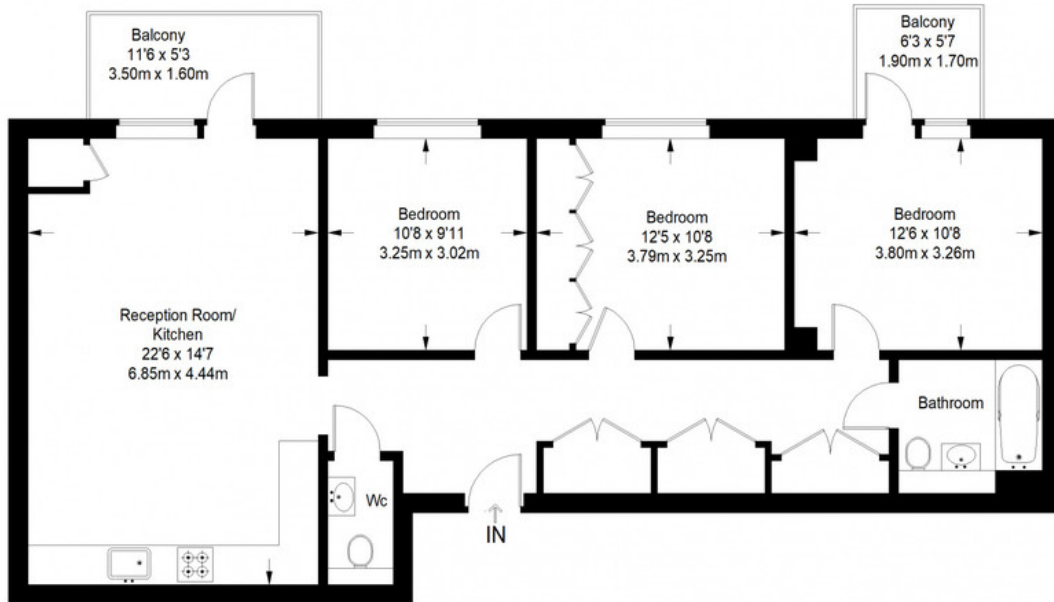


*Munday's Estate Agents Ltd.*  
2 Mary Boast Walk  
London SE5 8SP  
020 3318 8900

[www.mundays.com](http://www.mundays.com)

MUNDAY'S

## Fresco House



**Second Floor = 999 sq ft**

Approximate Gross Internal Area  
SECOND FLOOR = 999 sq ft / 92.81 sq m  
Total = 999 sq ft / 92.81 sq m



This plan is for layout guidance only. Not drawn to scale unless stated. Windows and door openings are approximate. Whilst every care is taken in the preparation of this plan, please check all dimensions, shapes and compass bearings before making any decisions reliant upon them. (D357409)

*Munday's Estate Agents Ltd.*  
2 Mary Boast Walk  
London SE5 8SP  
020 3318 8900

[www.mundays.com](http://www.mundays.com)