

MUNDAY'S

Fox Hill, Crystal Palace

£1,995,000



Characterful and sensitively-refurbished five bedroom red-brick Victorian house of over 2,500 square feet, within Church Road Conservation Area. Chain free.

With period features galore, the handsome home is delivered over four original floors with two entrances, and further boasts a big and beautiful well-established south-facing garden which extends over 90 feet.

Walk just eight minutes for Crystal Palace Station (for regular and Overground ginger line rail services) and Crystal Palace Park. 'The Triangle' - for a multitude of independent shops, cafes and eateries - is even closer. Unrestricted parking is available on-street.

Munday's Estate Agents Ltd.
2 Mary Boast Walk
London SE5 8SP
020 3318 8900

www.mundays.com

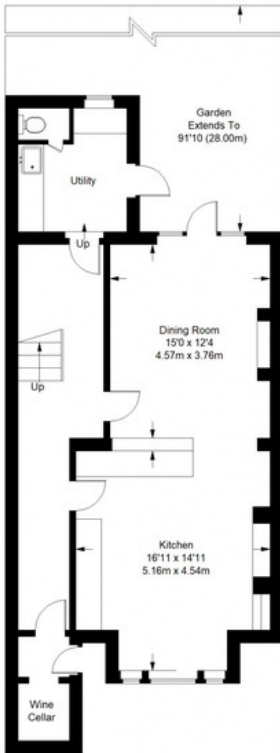
MUNDAY'S



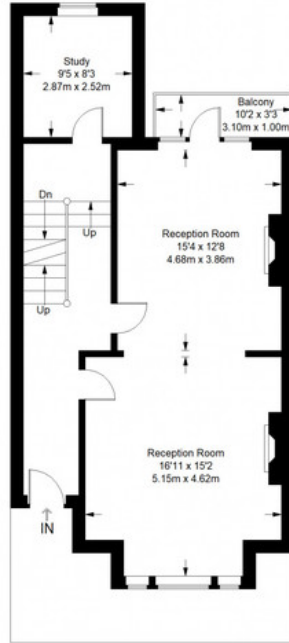
Munday's Estate Agents Ltd.
2 Mary Boast Walk
London SE5 8SP
020 3318 8900

www.mundays.com

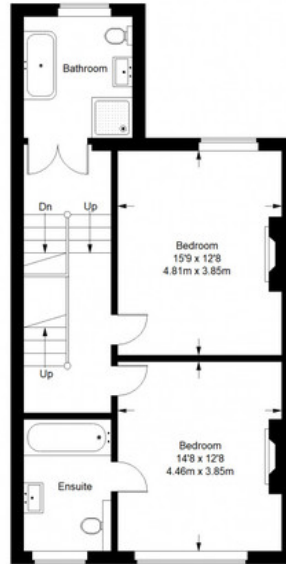
Fox Hill



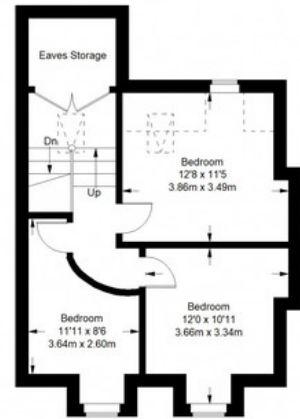
Lower Ground Floor = 730 sq ft



Ground Floor = 698 sq ft



First Floor = 699 sq ft



Second Floor = 435 sq ft

Approximate Gross Internal Area
 LOWER GROUND FLOOR = 730 sq ft / 67.82 sq m
 GROUND FLOOR = 698 sq ft / 64.84 sq m
 FIRST FLOOR = 699 sq ft / 64.94 sq m
 SECOND FLOOR (EXCLUDING EAVES STORAGE) = 435 sq ft / 40.41 sq m
 Total = 2562 sq ft / 238.01 sq m



This plan is for layout guidance only. Not drawn to scale unless stated. Windows and door openings are approximate. Whilst every care is taken in the preparation of this plan, please check all dimensions, shapes and compass bearings before making any decisions reliant upon them. (ID357409)