

MUNDAY'S

Flaxman Road, Camberwell

£435,000



Oversized one double bedroom raised ground floor conversion apartment within a handsome bay-fronted end of terrace Victorian townie.

Find it within easy reach of Loughborough Junction trains (a few minutes by foot, Zone 2), central Camberwell, and central Brixton, too.

Munday's Estate Agents Ltd.
2 Mary Boast Walk
London SE5 8SP
020 3318 8900

www.mundays.com

MUNDAY'S

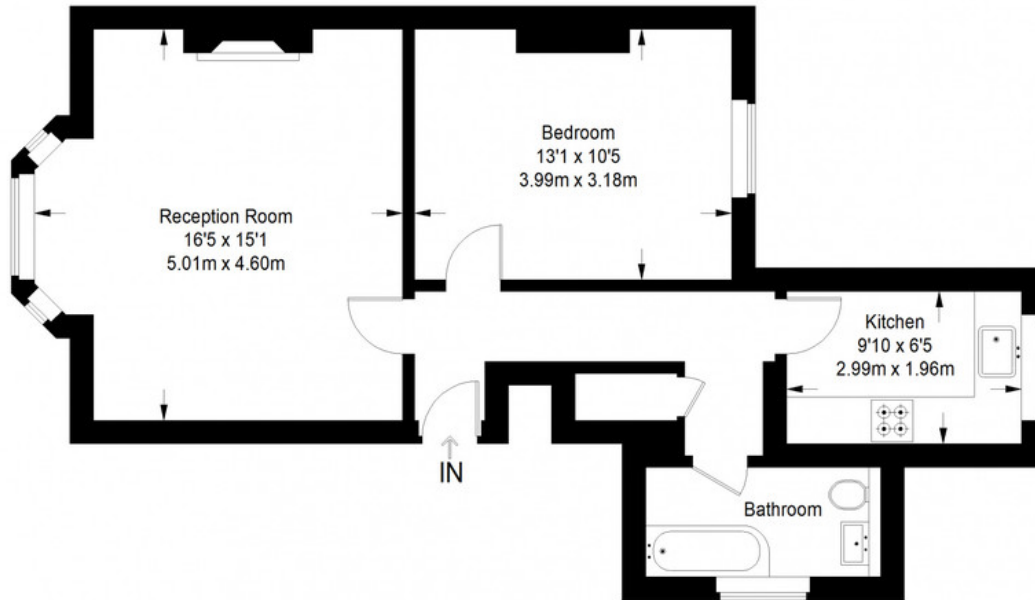


Munday's Estate Agents Ltd.
2 Mary Boast Walk
London SE5 8SP
020 3318 8900

www.mundays.com

MUNDAY'S

Flaxman Road



Raised Ground Floor = 584 sq ft

Approximate Gross Internal Area
RAISED GROUND FLOOR = 584 sq ft / 54.25 sq m
Total = 584 sq ft / 54.25 sq m



This plan is for layout guidance only. Not drawn to scale unless stated. Windows and door openings are approximate. Whilst every care is taken in the preparation of this plan, please check all dimensions, shapes and compass bearings before making any decisions reliant upon them. (ID357409)

Munday's Estate Agents Ltd.
2 Mary Boast Walk
London SE5 8SP
020 3318 8900

www.mundays.com