

MUNDAY'S

Fairby Road, Lee

£425,000



Generous and bright maisonette with two double bedrooms, double-glazed windows, its own front door, good and thoughtful storage, solid oak herringbone floors, and cool custom carpentry.

Find your new pleasing pad on a leafy and sleepy cul de sac, where parking is unrestricted. Walk 12 minutes to Kidbrooke Station or 15 to Lee Station for mainline trains, or pick up a bus from nearby Eltham Road or Sidcup Road.

Munday's Estate Agents Ltd.
2 Mary Boast Walk
London SE5 8SP
020 3318 8900

www.mundays.com

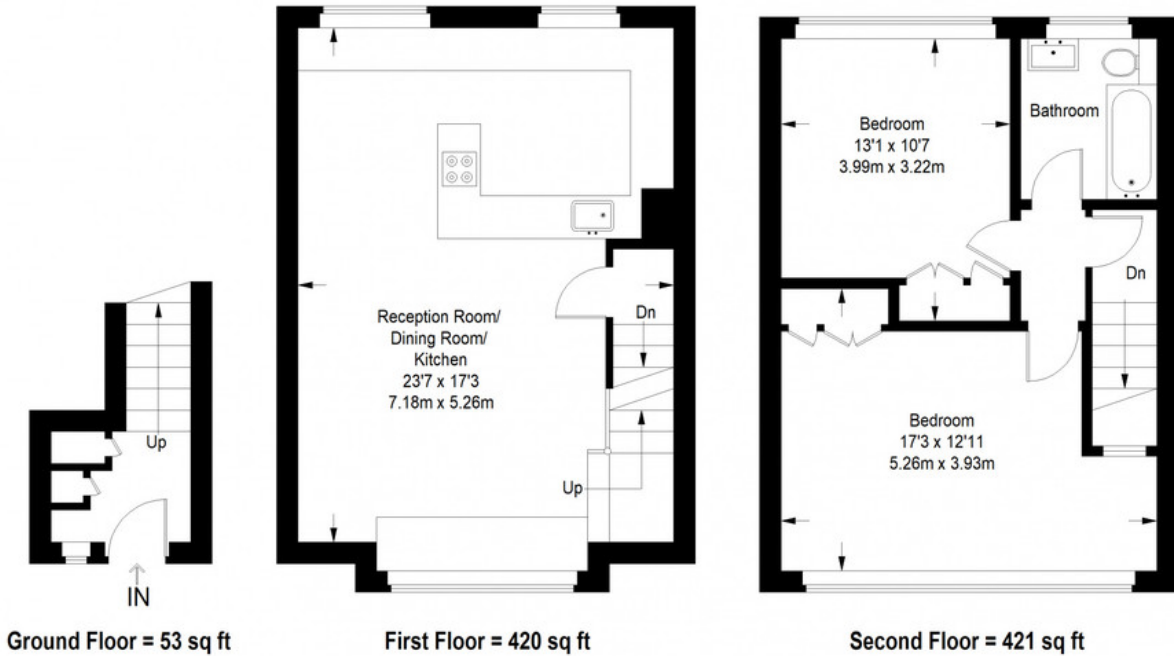
MUNDAY'S



Munday's Estate Agents Ltd.
2 Mary Boast Walk
London SE5 8SP
020 3318 8900

www.mundays.com

Fairby Road



Approximate Gross Internal Area
GROUND FLOOR = 53 sq ft / 4.92 sq m
FIRST FLOOR = 420 sq ft / 39.02 sq m
SECOND FLOOR = 421 sq ft / 39.11 sq m
Total = 894 sq ft / 83.05 sq m



This plan is for layout guidance only. Not drawn to scale unless stated. Windows and door openings are approximate. Whilst every care is taken in the preparation of this plan, please check all dimensions, shapes and compass bearings before making any decisions reliant upon them. (ID357409)