

MUNDAY'S

Edward Street, New Cross

£875,000



Bay-fronted Victorian mid-terrace house of 1198 square feet, with double-glazing, three double bedrooms, a smart extension to the ground floor, and a sunny garden. Chain free.

The handsome house is situated just a couple of minutes from Fordham Park and Deptford Green Secondary School (good local primaries are also close), in well-connected New Cross/Deptford borderland.

Walk just six minutes to New Cross Station, or 10 to Deptford Station (regular and Overground services are therefore covered). Both town centres are at your feet in six minutes.

Munday's Estate Agents Ltd.
2 Mary Boast Walk
London SE5 8SP
020 3318 8900

www.mundays.com

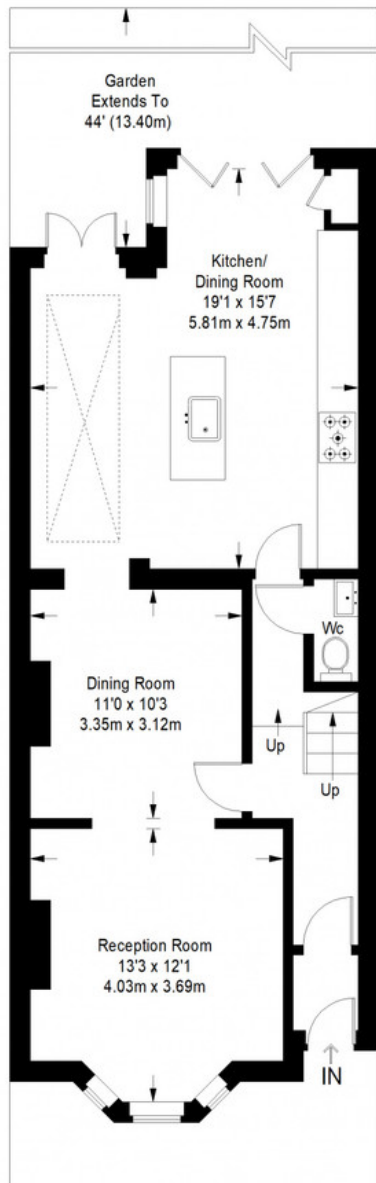
MUNDAY'S



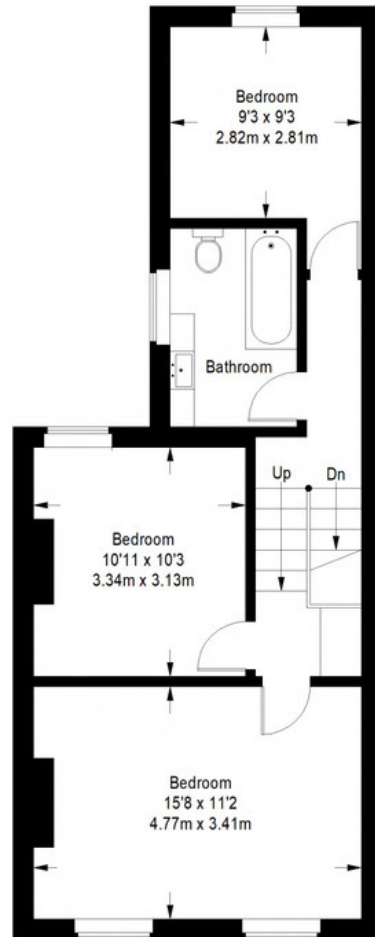
Munday's Estate Agents Ltd.
2 Mary Boast Walk
London SE5 8SP
020 3318 8900

www.mundays.com

Edward Street



Ground Floor = 656 sq ft



First Floor = 542 sq ft

Approximate Gross Internal Area
 GROUND FLOOR = 656 sq ft / 60.94 sq m
 FIRST FLOOR = 542 sq ft / 50.35 sq m
 Total = 1198 sq ft / 111.29 sq m



This plan is for layout guidance only. Not drawn to scale unless stated. Windows and door openings are approximate. Whilst every care is taken in the preparation of this plan, please check all dimensions, shapes and compass bearings before making any decisions reliant upon them. (ID357409)