

Dog Kennel Hill Estate, East Dulwich

£350,000



Bright and smart one bedroom fourth floor ex-LA flat - of 434 square feet - in a prime and quiet location. You are just eight minutes by foot from East Dulwich Station, and 10 from Denmark Hill Station (both Fare Zone 2). Unrestricted parking is available for residents, and it is also possible for residents to apply for bike lockers.

What a top spot! East Dulwich, Peckham and Camberwell town centres are all local. Your closest high streets are Lordship Lane and Bellenden Road - walk just 10 minutes to each.

The pleasing property is set in a low-rise Southwark Council block (brick-built) dating from the nineteen-thirties. This flat was cleverly converted from a drying room in 2014, as part of a thorough overhaul of the whole estate. The flat is in great just-move-in order, and windows are double-glazed.

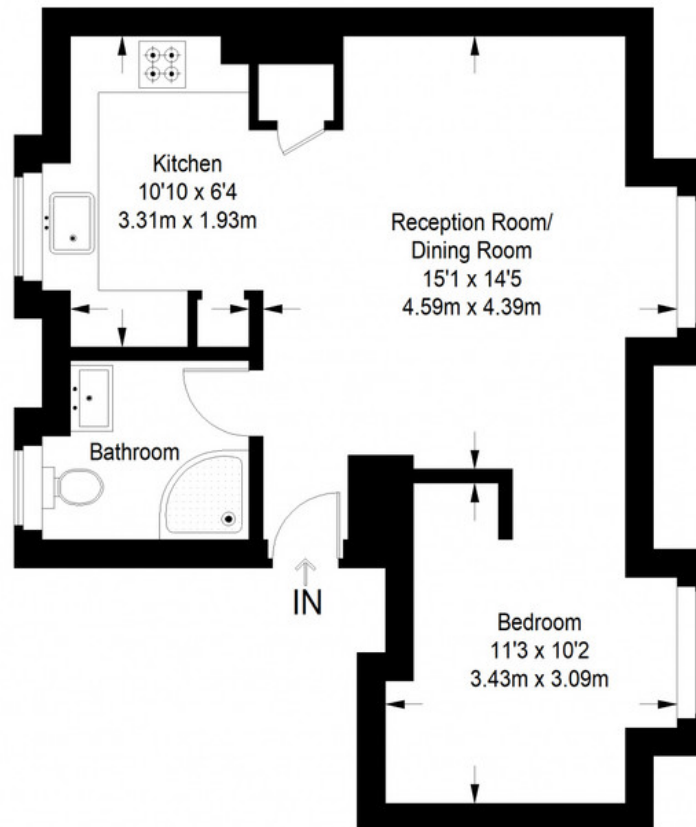
MUNDAY'S



Munday's Estate Agents Ltd.
2 Mary Boast Walk
London SE5 8SP
020 3318 8900

www.mundays.com

Petworth House



Fourth Floor = 434 sq ft

Approximate Gross Internal Area
FOURTH FLOOR = 434 sq ft / 40.32 sq m
Total = 434 sq ft / 40.32 sq m



This plan is for layout guidance only. Not drawn to scale unless stated. Windows and door openings are approximate. Whilst every care is taken in the preparation of this plan, please check all dimensions, shapes and compass bearings before making any decisions reliant upon them. (ID357409)