

Crofton Road, Camberwell

£499,950



Well-proportioned one bedroom ground floor Victorian conversion apartment of 531 square feet (excluding the handy cellar), with a cute courtyard garden off your kitchen. Chain free.

Find your new home on a quiet and tree-lined residential Lyndhurst toast-rack street in Camberwell/Peckham Rye borderland, between Peckham Rye and Denmark Hill Zone 2 stations - walk to these in nine and ten minutes respectively. Both are Fare Zone 2 and on the Overground network.

MUNDAY'S

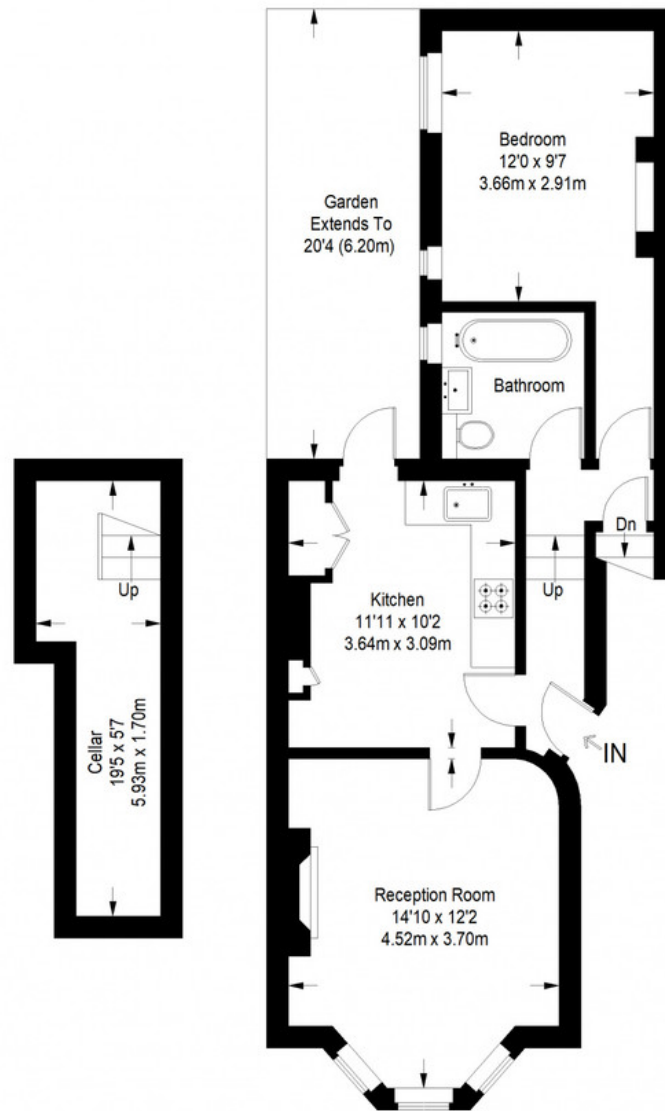


Munday's Estate Agents Ltd.
2 Mary Boast Walk
London SE5 8SP
020 3318 8900

www.mundays.com

MUNDAY'S

Crofton Road



Basement

Ground Floor = 531 sq ft

Approximate Gross Internal Area
GROUND FLOOR = 531 sq ft / 49.33 sq m
Total = 531 sq ft / 49.33 sq m



This plan is for layout guidance only. Not drawn to scale unless stated. Windows and door openings are approximate. Whilst every care is taken in the preparation of this plan, please check all dimensions, shapes and compass bearings before making any decisions reliant upon them. (ID357409)

Munday's Estate Agents Ltd.
2 Mary Boast Walk
London SE5 8SP
020 3318 8900

www.mundays.com