

MUNDAY'S

Cormont Road, Camberwell

£1,495,000



Lambeth's Minet Conservation Area hosts this substantial, traditional and characterful Victorian semi-detached house over three floors, with four bedrooms, both bath and shower rooms, and a well-established south-west facing garden stretching 30 feet.

There is more! You are in a pleasing park-facing position, and the house is being sold chain free.

Myatt's Fields (Victorian 14-acre) Park is mere strides from the door. Also local is popular nursery 'The Nest'. And your closest stations are Loughborough Junction (10 minutes by foot) and Stockwell, Oval and Denmark Hill (all within 20 minutes).

Munday's Estate Agents Ltd.
2 Mary Boast Walk
London SE5 8SP
020 3318 8900

www.mundays.com

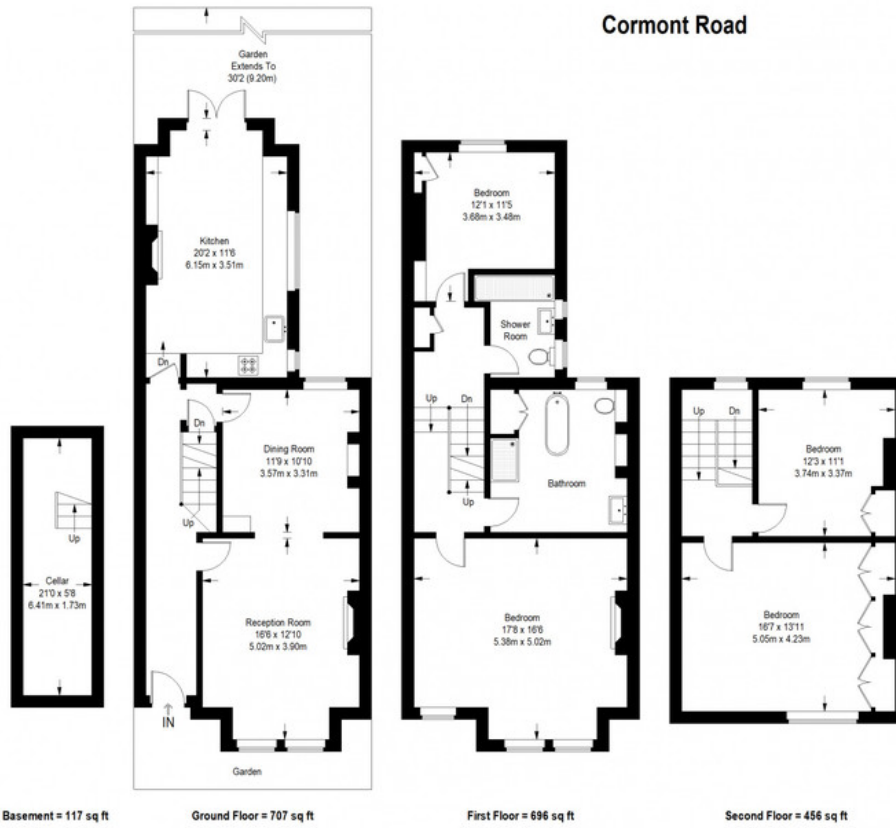
MUNDAY'S



Munday's Estate Agents Ltd.
2 Mary Boast Walk
London SE5 8SP
020 3318 8900

www.mundays.com

Cormont Road



Basement = 117 sq ft

Ground Floor = 707 sq ft

First Floor = 696 sq ft

Second Floor = 456 sq ft

Approximate Gross Internal Area
 GROUND FLOOR = 707 sq ft / 65.68 sq m
 FIRST FLOOR = 696 sq ft / 64.66 sq m
 SECOND FLOOR = 456 sq ft / 42.36 sq m
 Total = 1859 sq ft / 172.70 sq m

This plan is for layout guidance only. Not drawn to scale unless stated. Windows and door openings are approximate. Whilst every care is taken in the preparation of this plan, please check all dimensions, shapes and compass bearings before making any decisions reliant upon them. (ID357409)