

MUNDAY'S

Colls Road, Peckham

£899,950



Best and final offers invited by 3pm, Wednesday 4th September.

Dishy three bedroom bay-fronted Victorian mid-terrace house of 1210 square feet, with a pretty garden complete with a gorgeous studio (timber-clad, with power and folding doors). Parking is unrestricted, on the street.

Find your new home on a tree-lined residential back street (very quiet, very little traffic here), pleasingly close to Queens Road Peckham Station; which is just four minutes by foot, for regular and Overground rail services.

You are also but a 15 minute walk from Nunhead Station and Peckham Rye Station, Nunhead's high street area, and Rye Lane.

Munday's Estate Agents Ltd.
2 Mary Boast Walk
London SE5 8SP
020 3318 8900

www.mundays.com

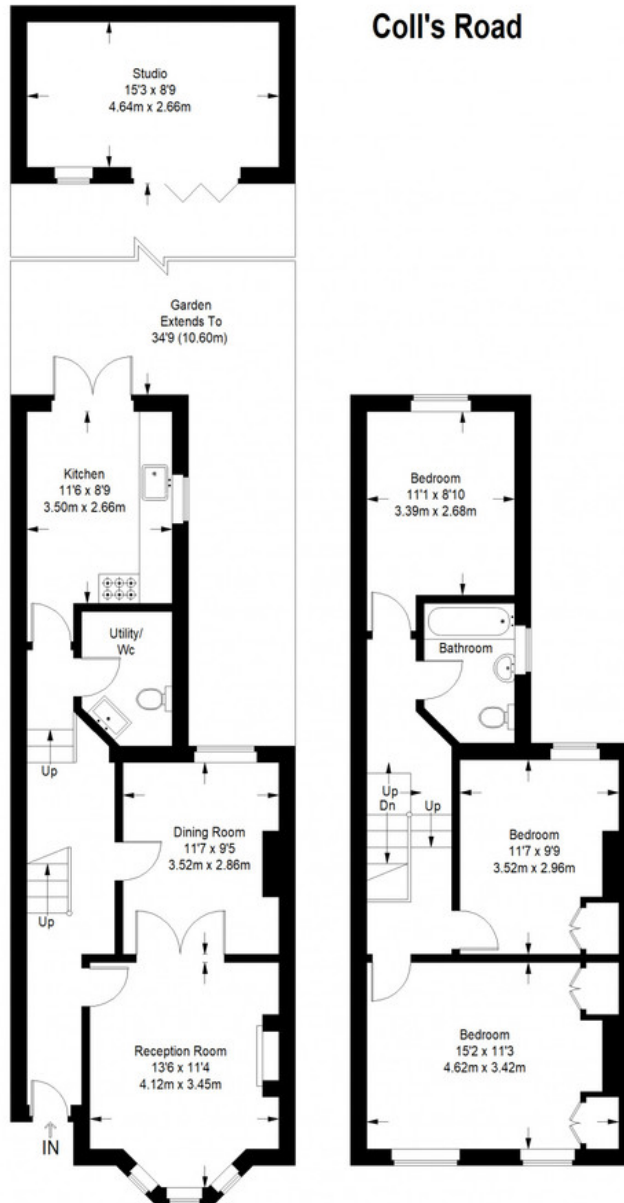
MUNDAY'S



Munday's Estate Agents Ltd.
2 Mary Boast Walk
London SE5 8SP
020 3318 8900

www.mundays.com

Coll's Road



Ground Floor = 538 sq ft

First Floor = 536 sq ft

Approximate Gross Internal Area
 GROUND FLOOR = 538 sq ft / 49.98 sq m
 FIRST FLOOR = 536 sq ft / 49.79 sq m
 STUDIO = 136 sq ft / 12.63 sq m
 Total = 1210 sq ft / 112.40 sq m



This plan is for layout guidance only. Not drawn to scale unless stated. Windows and door openings are approximate. Whilst every care is taken in the preparation of this plan, please check all dimensions, shapes and compass bearings before making any decisions reliant upon them. (ID357409)