

Choumert Road, Peckham Rye

£575,000



Delightful one double bedroom flat with direct access to a private part-walled paved and lawned garden of over 35 feet.

The flat works great as is; there is also scope to extend at the back and to the side, to bag yourself an extra bedroom (subject to relevant permissions).

The property takes the ground floor of a bay-fronted Victorian end of terrace house. There is just one flat above you (you share a hall).

The location is something to smile about, too: a dishy, always-requested tree-lined Victorian in the main SE15 street, which intersects Bellenden Road. Locally, it is referred to as the Champs-Élysées of Peckham!

Residents enjoy permit-parking (restrictions applying 9-11am; keeping those pesky park and ride commuters at bay!). Walk just seven minutes to Peckham Rye Station for Fare Zone 2 trains. You're also very close to Bellenden Road, Rye Lane and Warwick Gardens.

MUNDAY'S

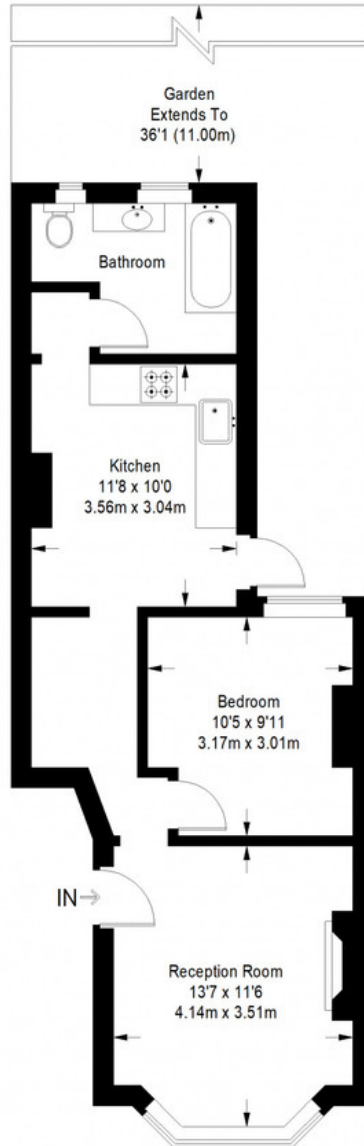


Munday's Estate Agents Ltd.
2 Mary Boast Walk
London SE5 8SP
020 3318 8900

www.mundays.com

MUNDAY'S

Choumert Road



Ground Floor = 501 sq ft

Approximate Gross Internal Area
GROUND FLOOR = 501 sq ft / 46.54 sq m
Total = 501 sq ft / 46.54 sq m



This plan is for layout guidance only. Not drawn to scale unless stated. Windows and door openings are approximate. Whilst every care is taken in the preparation of this plan, please check all dimensions, shapes and compass bearings before making any decisions reliant upon them. (ID357409)

Munday's Estate Agents Ltd.
2 Mary Boast Walk
London SE5 8SP
020 3318 8900

www.mundays.com