

MUNDAY'S

Casella Road, New Cross

£425,000



Delightful split-level one bedroom apartment of 60 square metres/646 square feet, with its own front door and a private part-walled garden. Find it within a handsome bay-fronted Victorian terraced townhouse.

The location is a residential tree-lined side street within New Cross's Hatcham Conservation Area. You are 10 minutes by foot to New Cross Gate Station (Fare Zone 2, one stop to London Bridge and on the Overground line). And 15 to Queens Road Peckham Station.

Munday's Estate Agents Ltd.
2 Mary Boast Walk
London SE5 8SP
020 3318 8900

www.mundays.com

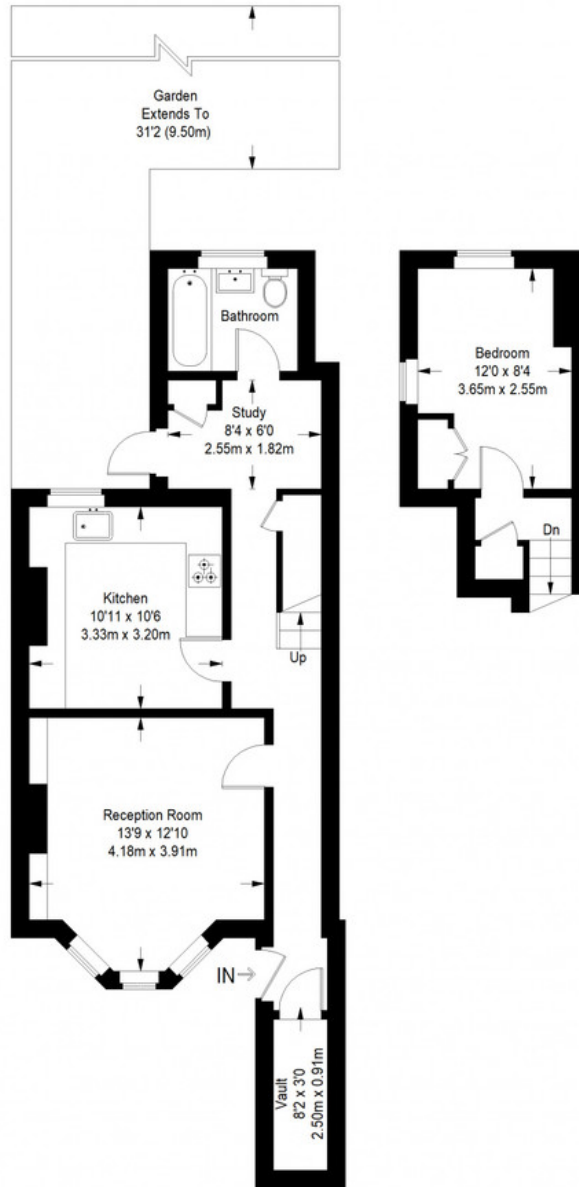
MUNDAY'S



Munday's Estate Agents Ltd.
2 Mary Boast Walk
London SE5 8SP
020 3318 8900

www.mundays.com

Casella Road



Lower Ground Floor = 517 sq ft

Raised Ground Floor = 129 sq ft

Approximate Gross Internal Area
 LOWER GROUND FLOOR = 517 sq ft / 48.03 sq m
 RAISED GROUND FLOOR = 129 sq ft / 11.98 sq m
 Total = 646 sq ft / 60.01 sq m



This plan is for layout guidance only. Not drawn to scale unless stated. Windows and door openings are approximate. Whilst every care is taken in the preparation of this plan, please check all dimensions, shapes and compass bearings before making any decisions reliant upon them. (ID357409)