

MUNDAY'S

Casella Road, New Cross

£550,000



Best and final offers invited by 5pm, Saturday 14th September.

Big, bright and chain free two double bedroom maisonette of 880 square feet – with a delightful private garden (with direct and side access) – on the upper floors of a handsome Victorian bay-fronted end of terrace.

Find your new pad within Hatcham Conservation Area, and next to (cute local park) Eckington Gardens.

You are but 10 minutes by foot to New Cross Gate Station (Fare Zone 2, one stop to London Bridge and on the Overground line). And 15 to Queens Road Peckham Station.

Munday's Estate Agents Ltd.
2 Mary Boast Walk
London SE5 8SP
020 3318 8900

www.mundays.com

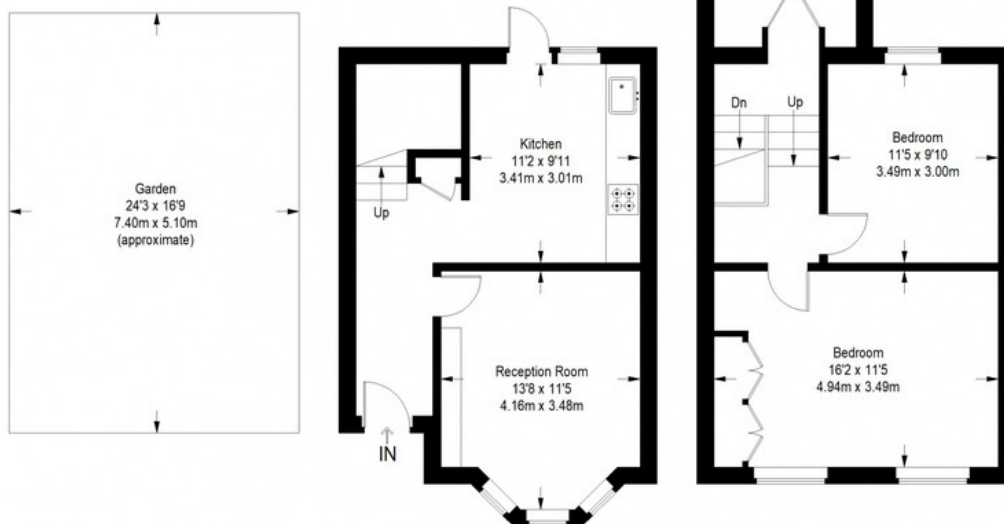
MUNDAY'S



Munday's Estate Agents Ltd.
2 Mary Boast Walk
London SE5 8SP
020 3318 8900

www.mundays.com

Casella Road



Ground Floor

Raised Ground Floor = 385 sq ft

First Floor = 495 sq ft

Approximate Gross Internal Area
RAISED GROUND FLOOR = 385 sq ft / 35.77 sq m
FIRST FLOOR = 495 sq ft / 45.99 sq m
Total = 880 sq ft / 81.75 sq m



This plan is for layout guidance only. Not drawn to scale unless stated. Windows and door openings are approximate. Whilst every care is taken in the preparation of this plan, please check all dimensions, shapes and compass bearings before making any decisions reliant upon them. (ID357409)