

Camberwell Grove, Camberwell

£650,000



Characterful two double bed, top (third) floor flat with a pleasing layout and splendid treetop views. Share of Freehold.

What a spot! Delightful Lettsom Gardens is a two minute walk from your door. Denmark Hill Station is also close for Fare Zone 2 regular and Overground trains - walk just seven minutes.

You can also stroll to Camberwell in nine minutes, East Dulwich (and its station) in 10, and Peckham's Bellenden Road plus Peckham Rye Station in 15.

Find the bright and classy pad within a row of near-identical stucco-fronted listed Georgian houses at the top of Camberwell Grove, in Camberwell Grove Conservation Area. It is a grand Regency-style terrace on one of the finest and most well-connected streets south of the river.

MUNDAY'S

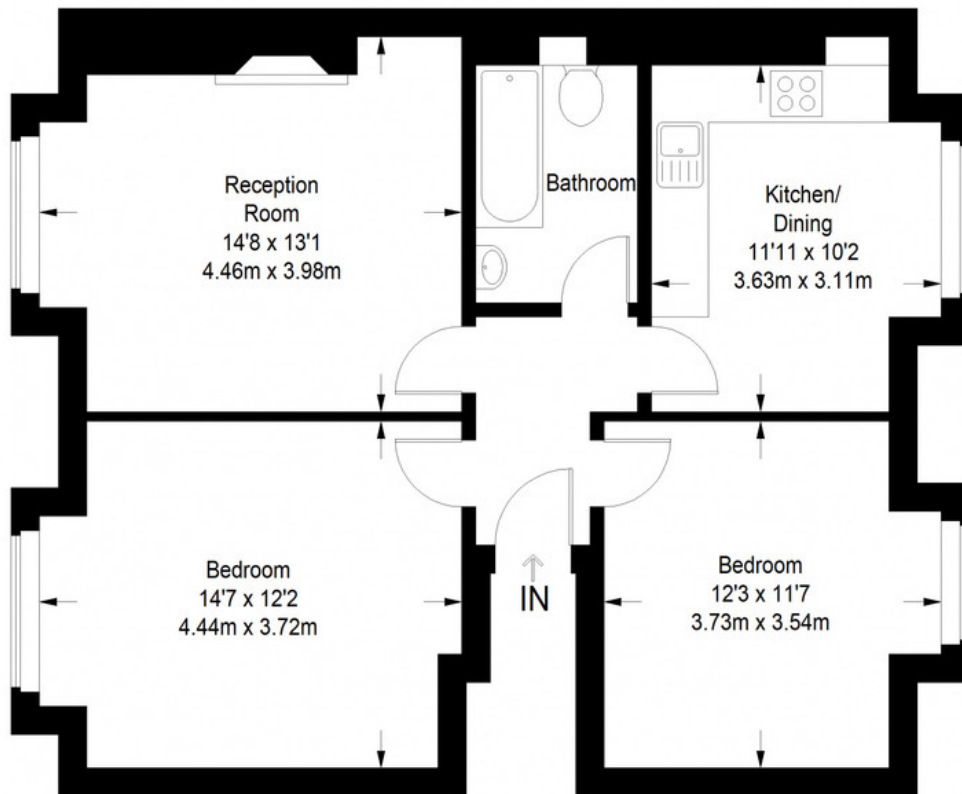


Munday's Estate Agents Ltd.
2 Mary Boast Walk
London SE5 8SP
020 3318 8900

www.mundays.com

MUNDAY'S

Camberwell Grove



Third Floor = 692 sq ft

Approximate Gross Internal Area
THIRD FLOOR = 692 sq ft / 64.29 sq m
Total = 692 sq ft / 64.29 sq m



This plan is for layout guidance only. Not drawn to scale unless stated. Windows and door openings are approximate. Whilst every care is taken in the preparation of this plan, please check all dimensions, shapes and compass bearings before making any decisions reliant upon them. (ID357409)

Munday's Estate Agents Ltd.
2 Mary Boast Walk
London SE5 8SP
020 3318 8900

www.mundays.com