

Bushey Hill Road, Camberwell

£625,000



Glorious ground floor two double bedroom apartment with direct access to a large communal garden (this has secure gated side access as well).

The striking detached building in which it rests - with its Art Deco style and pleasing symmetry - was conceived and intended for industrial use in the 1930s. But the neighbours were having absolutely none of that! It was instead neatly converted into just twelve notably well-laid-out flats.

The property is fully double-glazed and has been sensitively and thoughtfully refurbished, modernised and well-maintained by the current owners.

Closest stations? Peckham Rye Station is an 11 minute walk and Denmark Hill Station is yours in 12. Find excellent bus routes from Peckham Road at the foot of the street, and you have got permit-parking on-street.

MUNDAY'S

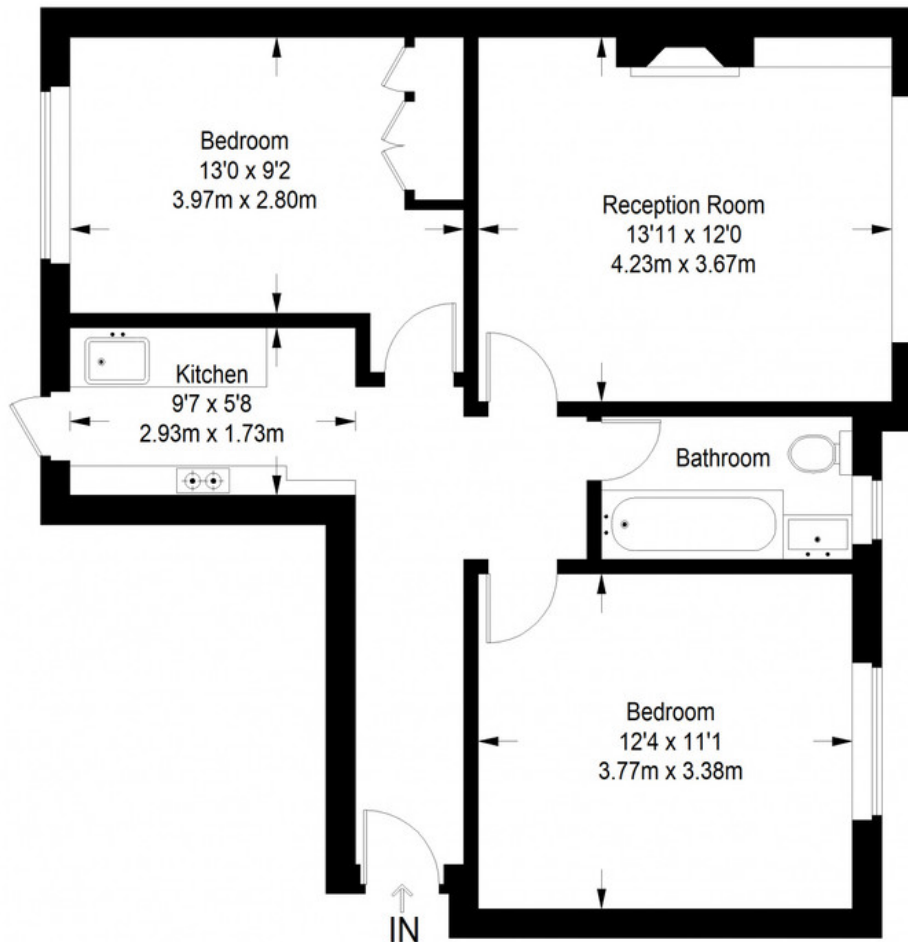


Munday's Estate Agents Ltd.
2 Mary Boast Walk
London SE5 8SP
020 3318 8900

www.mundays.com

MUNDAY'S

Bushey Hall



Ground Floor = 640 sq ft

Approximate Gross Internal Area
GROUND FLOOR = 640 sq ft / 59.46 sq m
Total = 640 sq ft / 59.46 sq m



This plan is for layout guidance only. Not drawn to scale unless stated. Windows and door openings are approximate. Whilst every care is taken in the preparation of this plan, please check all dimensions, shapes and compass bearings before making any decisions reliant upon them. (ID357409)

Munday's Estate Agents Ltd.
2 Mary Boast Walk
London SE5 8SP
020 3318 8900

www.mundays.com