

MUNDAY'S

Burton Road, Camberwell

£750,000



Stylish, spacious and characterful two double bedroom split-level apartment of 1037 square feet. The Victorian property has a great layout, strong built-in storage, and a Freehold-share. You will also enjoy a bright triple-aspect, thanks to the building being in end of terrace position.

Locate your immaculate new pad in a leafy residential spot within Lambeth's Minet Conservation Area. You are tucked away from the hustle and bustle, delightfully close to Myatt's Fields Park.

Your nearest stations are Loughborough Junction (10 minutes by foot) and Stockwell and Brixton (15 minutes by foot). Oval, Denmark Hill and Herne Hill are all within 20 minutes by foot. And excellent bus connections are provided for on both Brixton Road and Camberwell New Road (both are within a short walking distance).

Munday's Estate Agents Ltd.
2 Mary Boast Walk
London SE5 8SP
020 3318 8900

www.mundays.com

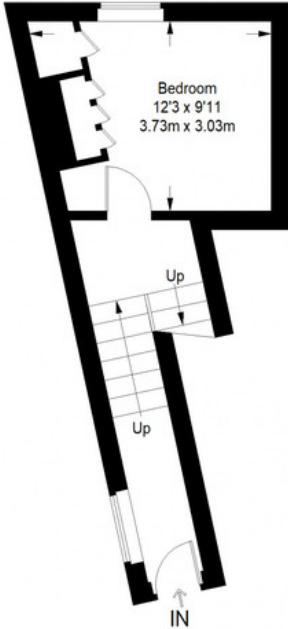
MUNDAY'S



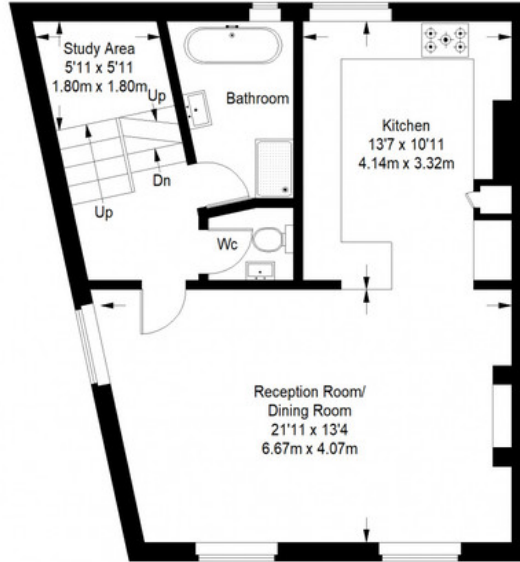
Munday's Estate Agents Ltd.
2 Mary Boast Walk
London SE5 8SP
020 3318 8900

www.mundays.com

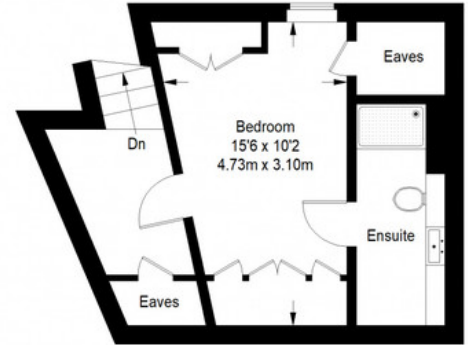
Burton Road



Ground Floor = 194 sq ft



First Floor = 594 sq ft



Second Floor = 249 sq ft

Approximate Gross Internal Area
GROUND FLOOR = 194 sq ft / 18.02 sq m
FIRST FLOOR = 594 sq ft / 55.18 sq m
SECOND FLOOR = 249 sq ft / 23.13 sq m
Total = 1037 sq ft / 96.34 sq m



This plan is for layout guidance only. Not drawn to scale unless stated. Windows and door openings are approximate. Whilst every care is taken in the preparation of this plan, please check all dimensions, shapes and compass bearings before making any decisions reliant upon them. (ID357409)