

MUNDAY'S

Brockley Rise, Honor Oak

£625,000



Cool two double bedroom garden flat within a handsome red-brick Victorian bay-fronted semi. Ceilings are high, all fittings are high-end, and you have beautiful bespoke carpentry to most rooms.

Find your new flat in a leafy yet well-connected spot near Blythe Hill Fields. You are just a 10 minute walk from Honor Oak Park Station (three stops to London Bridge, or jump on the Overground line here). Bus travel is easy as well.

Munday's Estate Agents Ltd.
2 Mary Boast Walk
London SE5 8SP
020 3318 8900

www.mundays.com

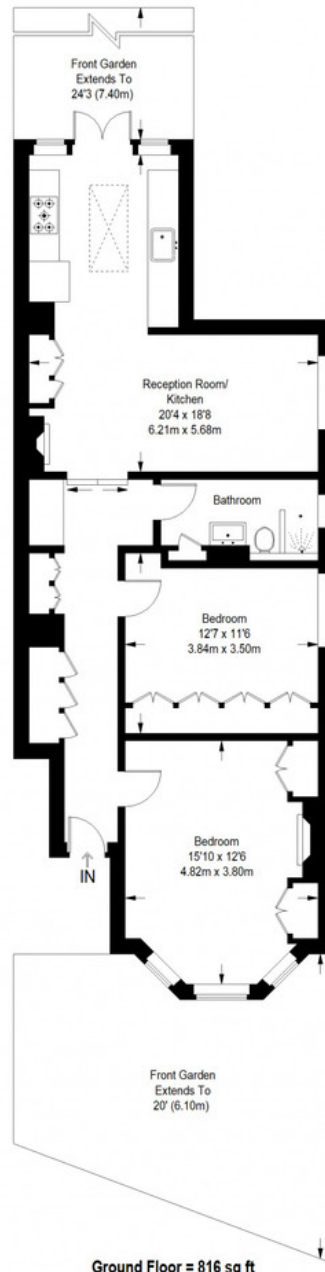
MUNDAY'S



Munday's Estate Agents Ltd.
2 Mary Boast Walk
London SE5 8SP
020 3318 8900

www.mundays.com

Brockley Rise



Ground Floor = 816 sq ft

Approximate Gross Internal Area
GROUND FLOOR = 816 sq ft / 75.81 sq m
Total = 816 sq ft / 75.81 sq m



This plan is for layout guidance only. Not drawn to scale unless stated. Windows and door openings are approximate. Whilst every care is taken in the preparation of this plan, please check all dimensions, shapes and compass bearings before making any decisions reliant upon them. (ID357409)