

MUNDAY'S

Breakspears Road, Brockley

£695,000



Big, bright and beautiful two bedroom conversion flat of over 800 square feet, on the first floor of a Brockley mansion, with a Freehold-share and a vast communal garden – access this from the rear of the raised ground floor. You may also access the garden via Breakspears Mews.

Period features are plentiful. We love the high ceilings, sash windows and original floor boards. The owners have lived in this property for eight years, but have lived in the building itself for a total of 16 years.

Walk six minutes to St. John's Station and 12 to Brockley Station. Further to this, Deptford Bridge and Lewisham (for DLR services) are both a 14 minute walk.

*Munday's Estate Agents Ltd.*  
2 Mary Boast Walk  
London SE5 8SP  
020 3318 8900

[www.mundays.com](http://www.mundays.com)

MUNDAY'S



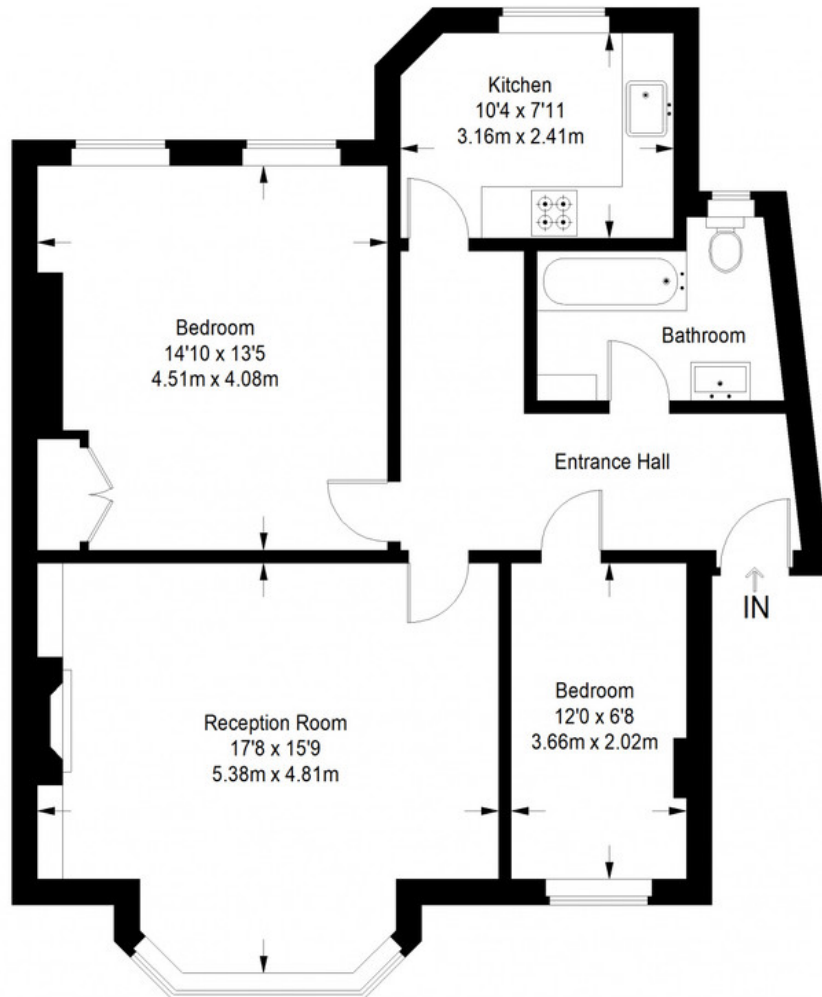
*Munday's Estate Agents Ltd.*  
2 Mary Boast Walk  
London SE5 8SP  
020 3318 8900

[www.mundays.com](http://www.mundays.com)



**MUNDAY'S**

## Breakspears Road



**First Floor = 816 sq ft**

Approximate Gross Internal Area  
FIRST FLOOR = 816 sq ft / 75.81 sq m  
Total = 816 sq ft / 75.81 sq m



This plan is for layout guidance only. Not drawn to scale unless stated. Windows and door openings are approximate. Whilst every care is taken in the preparation of this plan, please check all dimensions, shapes and compass bearings before making any decisions reliant upon them. (ID357409)

*Munday's Estate Agents Ltd.*  
2 Mary Boast Walk  
London SE5 8SP  
020 3318 8900

[www.mundays.com](http://www.mundays.com)