

MUNDAY'S

Benhill Road, Camberwell

£1,100,000



Pleasing three bedroom Victorian bay-fronted mid-terrace house with a smart and sunny west-facing garden. Chain free.

Find it on a popular tree-lined residential street close to Brunswick Park and Lucas Gardens.

Your closest station is Denmark Hill - walk here in 14 minutes. From Camberwell Church Street you have loads of great bus routes. To pick up the tube, it is a short bus journey to Oval/Elephant.

Local schools include Lyndhurst Primary and The Villa Nursery and Pre-Prep. School.

*Munday's Estate Agents Ltd.*  
2 Mary Boast Walk  
London SE5 8SP  
020 3318 8900

[www.mundays.com](http://www.mundays.com)

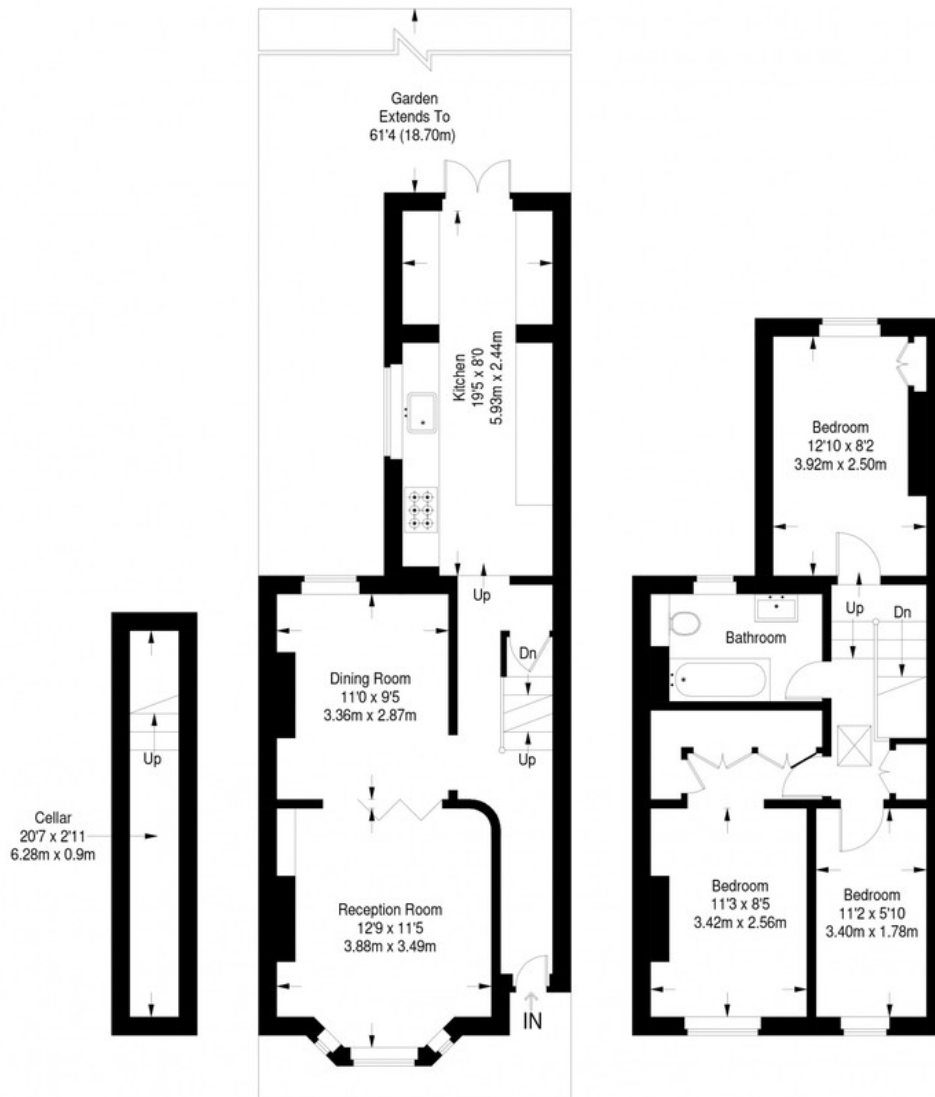
MUNDAY'S



*Munday's Estate Agents Ltd.*  
2 Mary Boast Walk  
London SE5 8SP  
020 3318 8900

[www.mundays.com](http://www.mundays.com)

## Benhill Road



Ground Floor = 505 sq ft

First Floor = 447 sq ft

Approximate Gross Internal Area  
 GROUND FLOOR = 505 sq ft / 46.91 sq m  
 FIRST FLOOR = 447 sq ft / 41.53 sq m  
 CELLAR = 61 sq ft / 5.65 sq m  
 Total (including Cellar) = 1013 sq ft / 94.09 sq m



This plan is for layout guidance only. Not drawn to scale unless stated. Windows and door openings are approximate. Whilst every care is taken in the preparation of this plan, please check all dimensions, shapes and compass bearings before making any decisions reliant upon them. (ID357409)