

MUNDAY'S

Barry Road, East Dulwich

£799,950



Spacious three bedroom maisonette of 1100 square feet, set across the two lower floors of a bay-fronted Victorian town house, with large west-facing lawned garden (which extends 90 feet!). You have direct access to your own private garden from both floors.

You are close to Lordship Lane and North Cross Road, and to two wonderful green spaces: Peckham Rye Park and Dulwich Park. You are also within easy reach of good local nursery, primary and secondary phase schools.

East Dulwich Station (Zone 2) is a 16 minute walk, with Peckham Rye Station just a bit further for added Overground links. You also have multiple bus routes to utilise. Parking is currently unrestricted on the street.

Munday's Estate Agents Ltd.
2 Mary Boast Walk
London SE5 8SP
020 3318 8900

www.mundays.com

MUNDAY'S

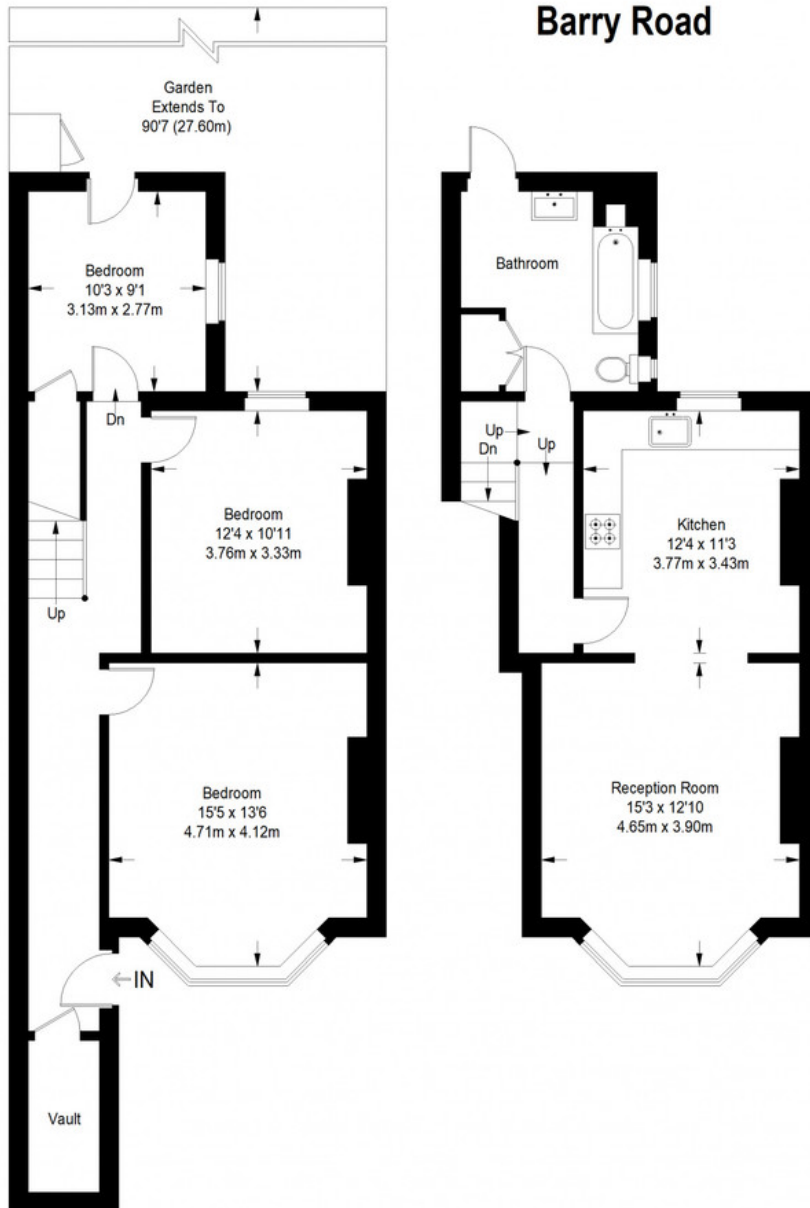


Munday's Estate Agents Ltd.
2 Mary Boast Walk
London SE5 8SP
020 3318 8900

www.mundays.com

MUNDAY'S

Barry Road



Approximate Gross Internal Area
LOWER GROUND FLOOR = 615 sq ft / 57.13 sq m
RAISED GROUND FLOOR = 486 sq ft / 45.15 sq m
Total = 1101 sq ft / 102.28 sq m



This plan is for layout guidance only. Not drawn to scale unless stated. Windows and door openings are approximate. Whilst every care is taken in the preparation of this plan, please check all dimensions, shapes and compass bearings before making any decisions reliant upon them. (ID357409)

Munday's Estate Agents Ltd.
2 Mary Boast Walk
London SE5 8SP
020 3318 8900

www.mundays.com