

Autumn Drive, Sutton

£275,000



Chain free two bedroom ground floor flat of 549 square feet, with a designated parking space, set within a low-rise purpose-built development with leafy communal grounds.

The property is in great decorative order; nice and neutral, with double-glazed windows throughout.

Belmont and Sutton stations (both Fare Zone 5) are your closest - walk 11 and 21 minutes - providing direct access into Clapham Junction, London Victoria & London Bridge in under 30 minutes. There are excellent bus routes on the doorstep too.

MUNDAY'S

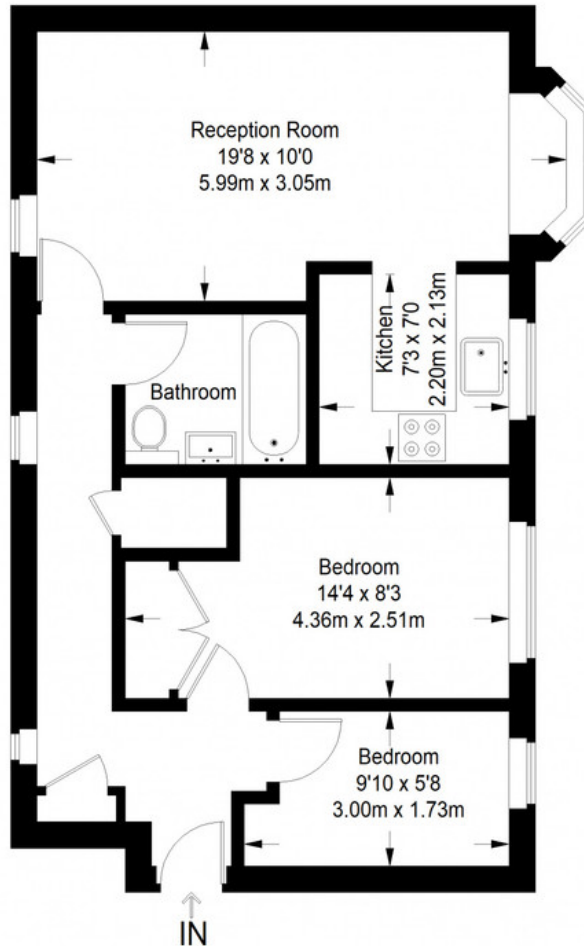


Munday's Estate Agents Ltd.
2 Mary Boast Walk
London SE5 8SP
020 3318 8900

www.mundays.com

MUNDAY'S

Autumn Drive



Ground Floor = 549 sq ft

Approximate Gross Internal Area
GROUND FLOOR = 549 sq ft / 51.00 sq m
Total = 549 sq ft / 51.00 sq m



This plan is for layout guidance only. Not drawn to scale unless stated. Windows and door openings are approximate. Whilst every care is taken in the preparation of this plan, please check all dimensions, shapes and compass bearings before making any decisions reliant upon them. (ID357409)

Munday's Estate Agents Ltd.
2 Mary Boast Walk
London SE5 8SP
020 3318 8900

www.mundays.com