

MUNDAY'S

Astbury Road, Peckham

£950,000



Offers in excess of £950,000.

Extended and well-presented five bed, two bath bay-fronted Victorian terrace of 1469 square feet over three floors (incorporating a beautifully executed loft conversion, completed in 2022). One of your bedrooms is currently in use as a dressing room, with built-in wardrobes and bespoke drapery throughout the room.

A neat lawned garden completes the package; this is over 40 feet and faces due south (buyers' favourite!) = you won't be short on sunshine! Parking is unrestricted, on-street.

Munday's Estate Agents Ltd.
2 Mary Boast Walk
London SE5 8SP
020 3318 8900

www.mundays.com

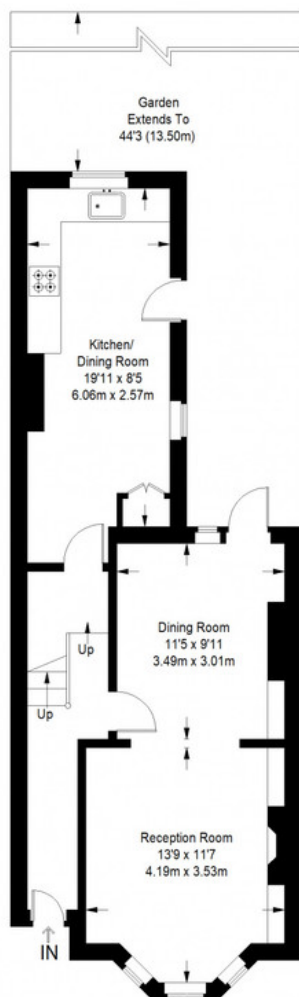
MUNDAY'S



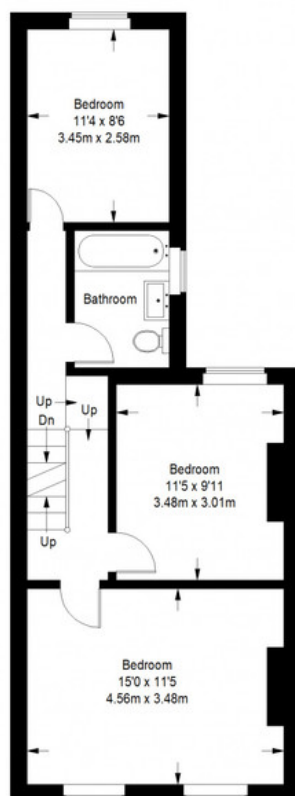
Munday's Estate Agents Ltd.
2 Mary Boast Walk
London SE5 8SP
020 3318 8900

www.mundays.com

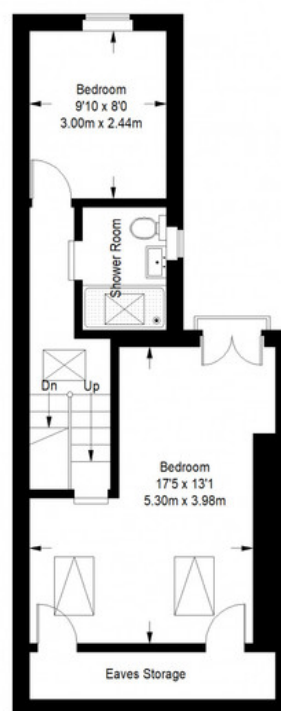
Astbury Road



Ground Floor = 539 sq ft



First Floor = 528 sq ft



Second Floor = 402 sq ft

Approximate Gross Internal Area
 GROUND FLOOR = 539 sq ft / 50.07 sq m
 FIRST FLOOR = 528 sq ft / 49.05 sq m
 SECOND FLOOR (EXCLUDING EAVES STORAGE) = 402 sq ft / 37.35 sq m
 Total = 1469 sq ft / 136.47 sq m

This plan is for layout guidance only. Not drawn to scale unless stated. Windows and door openings are approximate. Whilst every care is taken in the preparation of this plan, please check all dimensions, shapes and compass bearings before making any decisions reliant upon them. (ID357409)