

Ans dell Road, Nunhead

£1,195,000



Large and light terraced house delivered over three floors, with four double bedrooms and a study, three bathrooms (two are en suite), and a guest loo, too.

The location is a residential tree-lined street between Nunhead and Queens Road Peckham stations. Walk all of six minutes to each. Peckham Rye Station is a 15 minute walk.

The property measures in at a whopping 1908 square feet; this is inclusive of a recently-installed garden studio/room (with floor and roof insulation and double-glazed windows). Your garden is a sunny and low-maintenance one which faces west with a twist of south.

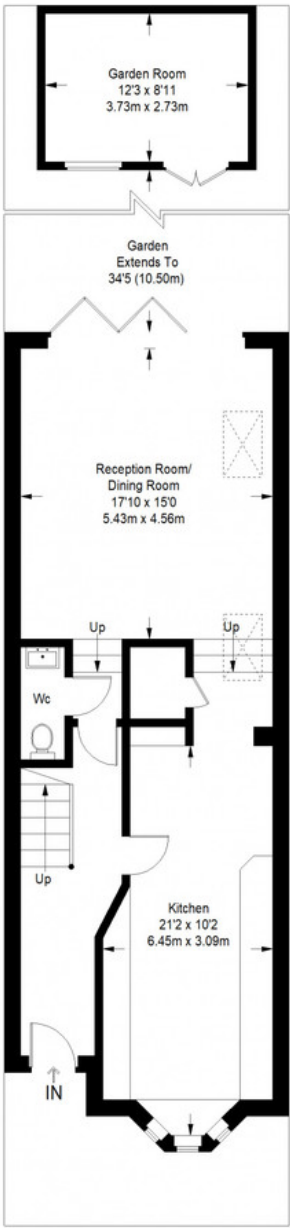
MUNDAY'S



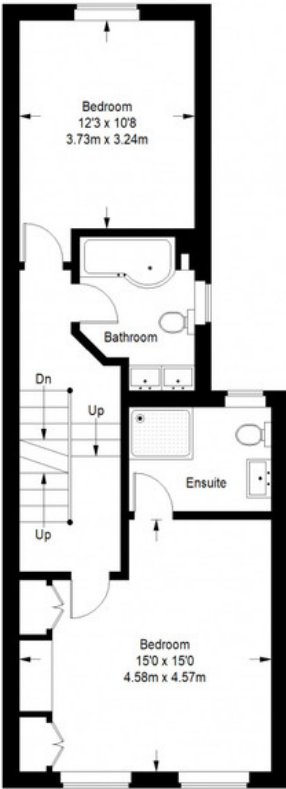
Munday's Estate Agents Ltd.
2 Mary Boast Walk
London SE5 8SP
020 3318 8900

www.mundays.com

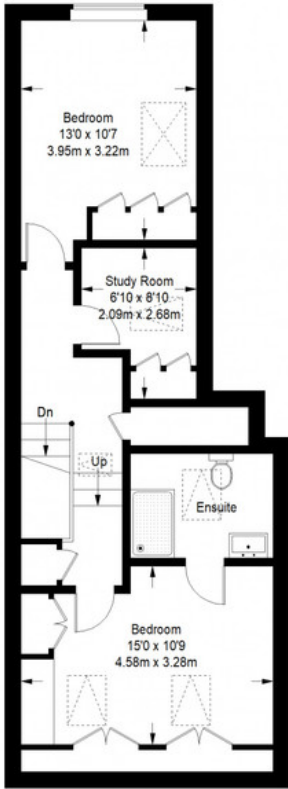
Ansdel Road



Ground Floor = 684 sq ft



First Floor = 572 sq ft



Second Floor = 543 sq ft

Approximate Gross Internal Area
GROUND FLOOR = 684 sq ft / 63.54 sq m
FIRST FLOOR = 572 sq ft / 53.14 sq m
SECOND FLOOR = 543 sq ft / 50.44 sq m
GARDEN ROOM = 109 sq ft / 10.13 sq m
Total = 1908 sq ft / 177.25 sq m



This plan is for layout guidance only. Not drawn to scale unless stated. Windows and door openings are approximate. Whilst every care is taken in the preparation of this plan, please check all dimensions, shapes and compass bearings before making any decisions reliant upon them. (ID357409)