

MUNDAY'S

Amott Road, Peckham Rye

£850,000



Neat fifties-built three bedroom house (one of a pair) with a sunny garden, which has been in the same family since being built. It rests in pleasing end-of-terrace position, on the corner with Keston Road. Chain free.

Amott Road is a popular residential street which puts you in striking distance of Peckham Rye Station, Bellenden Road, Peckham Rye Park and Common's 113 acres, and East Dulwich's Lordship Lane - walk seven to 10 minutes to all of these!

Munday's Estate Agents Ltd.
2 Mary Boast Walk
London SE5 8SP
020 3318 8900

www.mundays.com

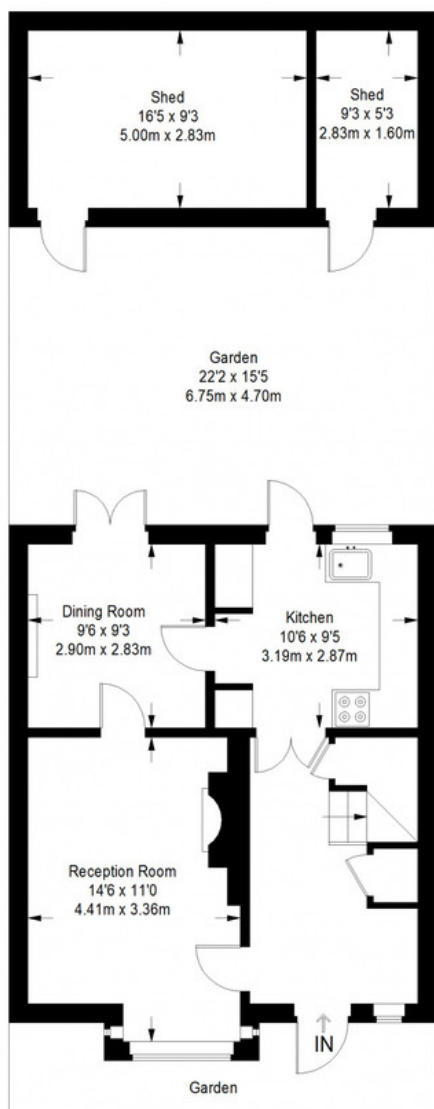
MUNDAY'S



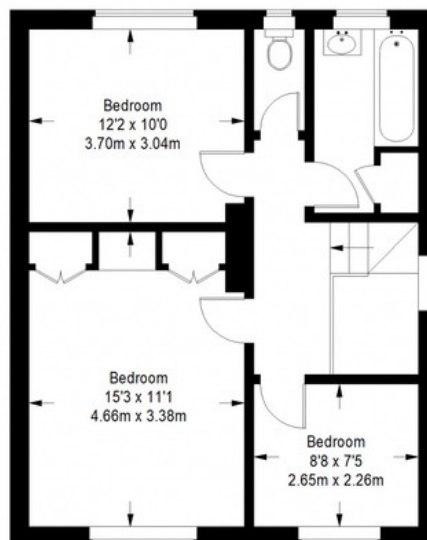
Munday's Estate Agents Ltd.
2 Mary Boast Walk
London SE5 8SP
020 3318 8900

www.mundays.com

Amott Road



Ground Floor = 492 sq ft



First Floor = 520 sq ft

Approximate Gross Internal Area
GROUND FLOOR = 492 sq ft / 45.71 sq m
FIRST FLOOR = 520 sq ft / 48.31 sq m
Total = 1012 sq ft / 94.01 sq m



This plan is for layout guidance only. Not drawn to scale unless stated. Windows and door openings are approximate. Whilst every care is taken in the preparation of this plan, please check all dimensions, shapes and compass bearings before making any decisions reliant upon them. (ID357409)