

MUNDAY'S

Bentley House, Peckham Road,  
Camberwell

£399,950



Smart and bright two bedroom first floor ex-LA pad of 635 square feet. It is located within a low-rise brick-built block which is set off the main road. The flat is fully double-glazed.

You are really well-located here - close to Brunswick Park, between Camberwell and Peckham's town centres, and just a 13 minute walk from Denmark Hill Station (you can also easily grab a bus from Peckham Road to Oval or Elephant & Castle for tubes).

*Munday's Estate Agents Ltd.*  
2 Mary Boast Walk  
London SE5 8SP  
020 3318 8900

[www.mundays.com](http://www.mundays.com)

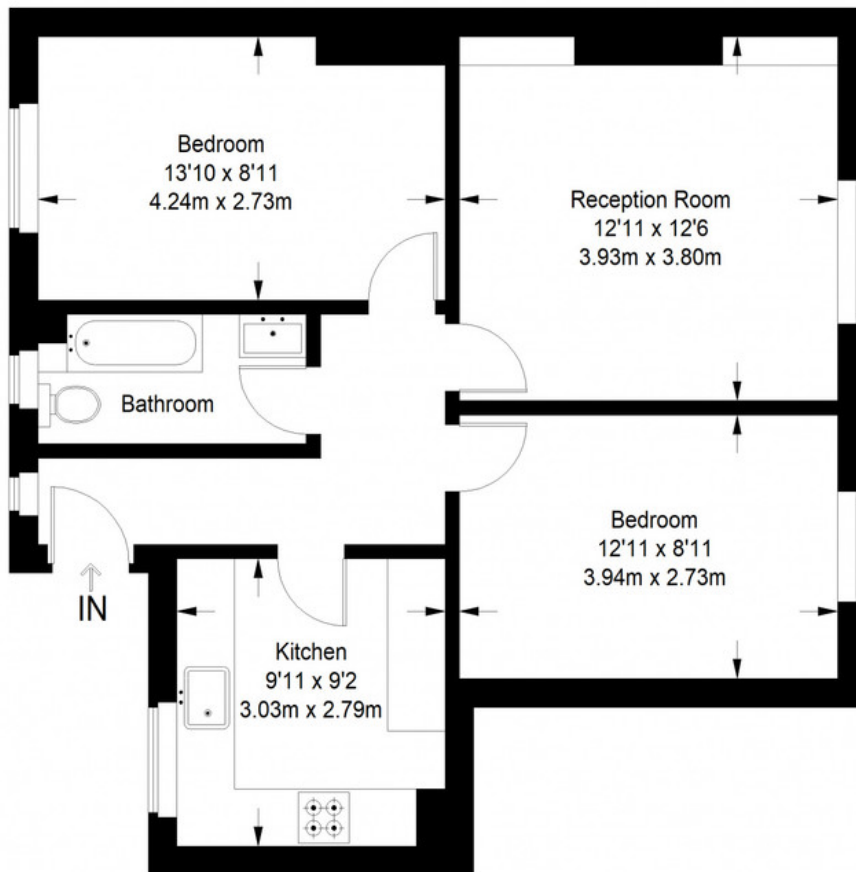
MUNDAY'S



Munday's Estate Agents Ltd.  
2 Mary Boast Walk  
London SE5 8SP  
020 3318 8900

[www.mundays.com](http://www.mundays.com)

## Bentley House



**First Floor = 635 sq ft**

Approximate Gross Internal Area  
FIRST FLOOR = 635 sq ft / 58.99 sq m  
Total = 635 sq ft / 58.99 sq m



This plan is for layout guidance only. Not drawn to scale unless stated. Windows and door openings are approximate. Whilst every care is taken in the preparation of this plan, please check all dimensions, shapes and compass bearings before making any decisions reliant upon them. (ID357409)